

Manufacturing
Delivering
GROWING
to meet your needs.

Joval
**MANUFACTURING
COMPANY, INC.**

Sales@joval.com

120 Iris ave, Jefferson, Louisiana 70121

(504) 835-7247 (504)835-6586

www.joval.com

2018 Catalog



Index

Conductor Elbows	19
Conductor Pipe	19
Dampers/ Damper Hardware	18-19
Diffusers	6
Duct Board Starting Collars	11
Elbows	5
Fixed Pitch Ventilator Bases	27
Fresh Air/Dryer Vent Hoods	19
Galvanized Half Round Gutter and Accessories	23
Gutter Seal.....	23
Heater Stands	28
Individual Panels for Assembly of Custom WYEs and Mixing Boxes	14
Insulated Boxes	15-18
Insulated WYEs	14
Metal Starting Collars	9
Metal Spin-In Starting Collars	9-10
Pans	20
Plenums	13
Reducers/Inceasers	8
Register Fittings	29
Round End Caps	28
Roof Flanges	21-22
Roof Flashings/HVAC Installation Accessories	25-26
Roof Vents, Low Profile (type F)	22
Slant Top Insulated Boxes	16
Slips, Drives, Duct Hanger	28
Snaplock Pipe	5
Solder	20
Stack Boots	7
Stand-Off Brackets	19
Stationary Ventilators	27
Tee Fittings.....	8
Titeseal Collars	11-12
Vent Collars	29
Wall Stacks	7
Wall Thimbles	29
Wind Band Vent Caps/Type R Vent Caps	29
Wye Fittings	8

Sales@Joval.com

PHONE: (504) 835-7247 • FAX: (504) 835-6586

WWW.JOVAL.COM

WILL CALL HOURS: Monday-Friday, 9-11am and 2-4pm
(excluding all major holidays)

SNAPLOCK PIPE



PART#	DESCRIPTION	PER BUNDLE
A0104	4" x 5'	25 ft
A0105	5" x 5'	50 ft
A0106	6" x 5'	50 ft
A0107	7" x 5'	50 ft
A0108	8" x 5'	50 ft
A0109	9" x 5'	50 ft
A0110	10" x 5'	50 ft
A0112	12" x 5'	50 ft
A0114	14" x 3'	30 ft
A0116	16" x 3'	30 ft
A0118	18" x 3'	30 ft
A0120	20" x 3'	30 ft
A0124	24" x 3'	30 ft

ELBOWS

Adjustable Elbows – 90 Degree



PART#	DESCRIPTION	PER PACK	PART#	DESCRIPTION	PER PACK
A0203	3 inch dia.	20	A0210	10 inch dia.	12
A0204	4 inch dia.	16	A0212	12 inch dia.	4
A0205	5 inch dia.	12	A0214	14 inch dia.	4
A0206	6 inch dia.	12	A0216	16 inch dia.	4
A0207	7 inch dia.	12	A0218	18 inch dia.	1
A0208	8 inch dia.	12	A0220	20 inch dia.	1
A0209	9 inch dia.	12	A0224	24 inch dia.	1

ELBOWS

Adjustable Elbows – 45 Degree



PART#	DESCRIPTION	PER PACK	PART#	DESCRIPTION	PER PACK
A0303	3 inch dia.	24	A0310	10 inch dia.	16
A0304	4 inch dia.	24	A0312	12 inch dia.	8
A0305	5 inch dia.	24	A0314	14 inch dia.	8
A0306	6 inch dia.	24	A0316	16 inch dia.	8
A0307	7 inch dia.	24	A0318	18 inch dia.	1
A0308	8 inch dia.	24	A0320	20 inch dia.	1
A0309	9 inch dia.	16			

SOLID ELBOWS

90 Degree

PART#	DESCRIPTION	PER PACK
A0253	3 inch dia.	12
A0254	4 inch dia.	12
A0255	5 inch dia.	12
A0256	6 inch dia.	12



SOLID ELBOWS

45 Degree

PART#	DESCRIPTION	PER PACK
A0353	3 inch dia.	24
A0354	4 inch dia.	24
A0355	5 inch dia.	24
A0356	6 inch dia.	24



PHONE: (504) 835-7247 • FAX: (504) 835-6586

WWW.JOVAL.COM

DIFFUSERS

Diffusers 400 Series



PART#	DESCRIPTION	PER PACK
A0401	5"X6"	8
A0402	6"X8"	12
A0403	6"X10"	12
A0404	7"X10"	12
A0405	8"X10"	12
A0406	8"X12"	10
A0407	9"X14"	6
A0408	6"X6"	20
A0409	7"X8"	12
A0410	8"X8"	8
A0411	9"X12"	10
A0412	9"X14"	5

Diffusers 450 Series (round with damper)



PART#	DESCRIPTION	PER PACK
A0451	05" - 06"	12
A0452	06" - 08"	10
A0453	06" - 10"	10
A0454	07" - 10"	10
A0455	08" - 10"	10
A0456	08" - 12"	10
A0457	09" - 14"	5
A0458	06" - 06"	20
A0459	07" - 08"	10
A0460	08" - 08"	8
A0461	09" - 12"	10
A0462	10" - 14"	5

Diffusers 500 Series (square)



PART#	DESCRIPTION	PER PACK
A0501	06" X 06" - 05"	20
A0502	07"X07"-06"	12
A0503	09"X09"-07"	8
A0504	12"X12"-08"	15
A0505	06"X06"-06"	16
A0506	08"X08"-06"	24
A0507	08"X08"-07"	24
A0508	08"X08"-08"	24
A0509	10"X10"-07"	18
A0510	10"X10"-08"	18
A0511	12"X12"-10"	5
A0512	14"X14"-10"	1
A0513	09"X09"-08"	18
A0514	10"X10"-09"	18
A0515	12"x12" -09"	12

SQUARE DIFFUSER

PHONE: (504) 835-7247 • FAX: (504) 835-6586

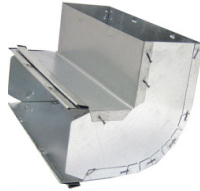
WWW.JOVAL.COM

WALL STACKS



JOVAL WALL STACK

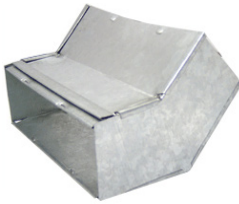
PART#	DESCRIPTION	PER PACK
A0801	08"X3 1/4" X12"	1
A0802	10"X3 1/4"X12"	1
A0803	12"X3 1/4"X12"	1
A0804	14"X3 1/4"X12"	1
A0811	08"X3 1/4"X24"	1
A0812	10"X3 1/4"X24"	1
A0813	12"X3 1/4"X24"	1
A0814	14"X3 1/4"X24"	1
A0821	08"X3 1/4"X60"	1
A0822	10"X3 1/4"X60"	1
A0823	12"X3 1/4"X60"	1
A0824	14"X3 1/4 "X60"	1
A0831	8"X3 1/4" X 36"	1
A0832	10"X3 1/4" X 36"	1
A0833	12"X 3 1/4" X 36"	1
A0834	14"X 3 1/4" X 36"	1
A0844	14"X 3 1/4" X 48"	1
A084A	ELBOW- 45 DEG. STYLE A	1
A084B	ELBOW-45 DEG. STYLE B	1
A089A	ELBOW- 90 DEG. STYLE A	1
A089B	ELBOW- 90 DEG. STYLE B	1
A0802EC	END CAP- 10"X 3 1/4"	1
A0804EC	END CAP-14"X 3 1/4"	1



STYLE 'A' 90 DEGREE



STYLE 'B' 90 DEGREE



STYLE 'A' 45 DEGREE



STYLE 'B' 45 DEGREE



JOVAL STACK BOOT

STACK BOOTS

STACK BOOTS 3000 SERIES (w/offset)

PART#	DESCRIPTION	PER PACK
A3002	10"X3 1/4"X06"	1
A3007	10"X3 1/4"X07"	1
A3008	10"X3 1/4"X08"	1

STACK BOOTS 3100 SERIES (center taper)

PART#	DESCRIPTION	PER PACK
A3101	8" X 3 1/4" X05"	1
A3102	10"X3 1/4"X06"	12
A3103	12"X3 1/4"X06"	1
A3104	12"X3 1/4"X07"	1
A3105	12"X3 1/4"X08"	1
A3106	14"X3 1/4"X08"	1
A3107	10"X3 1/4"X07"	24

WYE FITTINGS



PART#	DESCRIPTION	PER PACK
A0901	07"X05"X05"	6
A0902	08"X06"X06"	16
A0903	09"X07"X07"	10
A0904	10"X08"X08"	10
A0905	12"X08"X08"	6
A0906	12"X10"X08"	5
A0907	14"X12"X08"	1
A0908	16"X14"X08"	1
A0909	08"X08"X06"	9
A0910	08"X07"X07"	10
A0911	10"X07"X07"	10
A0912	10"X08"X07"	10
A0913	10"X08"X06"	10
A0914	10"X09"X07"	10
A0915	08"X08"X08"	6
A0916	08"X07"X06"	14
A0917	09"X08"X06"	10
A0918	09"X08"X07"	10
A0919	12"X10"X07"	6
A0900120909	12"X09"X09"	1
A0900121010	12"X10"X10"	1

TEE FITTINGS

PART#	DESCRIPTION	PER PACK
A0951	08"X08"X08"	8
A0952	10"X10"X08"	4
A0953	12"X12"X08"	4
A0954	12"X12"X12"	1
A0955	14"X14"X14"	1
A0956	16"X16"X16"	1
A0957	06"X06"X06"	1
A0958	03"X03"X03"	1
A0959	04"X04"X04"	1
A0960	05"X05"X05"	1



REDUCERS/INCREASERS

FOR PROPER PLACEMENT OF THE CRIMPING, PLEASE SPECIFY WHEN ORDERING INCREASERS. WE CAN ALSO PRODUCE ADDITIONAL SIZES TO THOSE LISTED HERE. PLEASE CALL US FOR PRICING AND AVAILABILITY.

PART#	DESCRIPTION	PER PACK		PART#	DESCRIPTION	PER PACK
A1101	06" X 05"	30		A1109	12" X 08"	7
A1102	07" X 06"	30		A1110	12" X 10"	7
A1103	08" X 06"	24		A1112	14" X 12"	7
A1104	08" X 07"	24		A1113	16" X 14"	7
A1105	09" X 07"	16		A1114	04" X 03"	1
A1106	10" X 06"	12		A1115	05" X 04"	1
A1107	10" X 07"	12		A1116	09" X 08"	16
A1108	10" X 08"	12		A1117	10" X 09"	12

PHONE: (504) 835-7247 • FAX: (504) 835-6586

WWW.JOVAL.COM

STARTING COLLARS



STARTING COLLARS 1400 SERIES

PART#	DESCRIPTION	PER PACK
A1401	5 inch dia.	35
A1402	6 inch dia.	30
A1403	7 inch dia.	25
A1404	8 inch dia.	20
A1405	9 inch dia.	14
A1406	10 inch dia.	12
A1407	12 inch dia.	7
A1408	14 inch dia.	6
A1409	16 inch dia.	1
A1410	18 inch dia.	1
A1411	20 inch dia.	1
A1412	4 inch dia.	50

STARTING COLLARS 1450 SERIES (W/DAMPER)

PART#	DESCRIPTION	PER PACK
A1451	5 inch dia.	35
A1452	6 inch dia.	30
A1453	7 inch dia.	25
A1454	8 inch dia.	20
A1455	9 inch dia.	14
A1456	10 inch dia.	12
A1457	12 inch dia.	5
A1458	14 inch dia.	3
A1459	16 inch dia.	1
A1460	18 inch dia.	1
A1461	20 inch dia.	1
A1462	4 inch dia.	50

METAL SPIN COLLARS 1500 SERIES (PLAIN)



PART#	DESCRIPTION	PER PACK
A1501	5 inch dia.	30
A1502	6 inch dia.	24
A1503	7 inch dia.	18
A1504	8 inch dia.	12
A1505	9 inch dia.	12
A1506	10 inch dia.	8
A1507	12 inch dia.	5
A1508	14 inch dia.	3
A1509	16 inch dia.	3
A1510	18 inch dia.	1
A1511	20 inch dia.	1
A1512	4 inch dia.	1

METAL SPIN COLLARS 1500D SERIES (W/DAMPER)

PART#	DESCRIPTION	PER PACK
D1501	5 inch dia.	30
D1502	6 inch dia.	24
D1503	7 inch dia.	18
D1504	8 inch dia.	12
D1505	9 inch dia.	12
D1506	10 inch dia.	8
D1507	12 inch dia.	5
D1508	14 inch dia.	3
D1509	16 inch dia.	3
D1510	18 inch dia.	1
D1511	20 inch dia.	1
D1512	4 inch dia.	1

METAL SPIN COLLARS 1500-S SERIES (w/scoop)

PART#	DESCRIPTION	PER PACK
S1501	5 inch dia.	30
S1502	6 inch dia.	24
S1503	7 inch dia.	18
S1504	8 inch dia.	12
S1505	9 inch dia.	12
S1506	10 inch dia.	8
S1507	12 inch dia.	5
S1508	14 inch dia.	3
S1509	16 inch dia.	3
S1510	18 inch dia.	1
S1511	20 inch dia.	1
S1512	4 inch dia.	1

PHONE: (504) 835-7247 • FAX: (504) 835-6586

WWW.JOVAL.COM

METAL SPIN COLLARS 1550 SERIES (w/scoop & damper)



PART#	DESCRIPTION	PER PACK
A1551	5 inch dia.	30
A1552	6 inch dia.	24
A1553	7 inch dia.	18
A1554	8 inch dia.	12
A1555	9 inch dia.	12
A1556	10 inch dia.	8
A1557	12 inch dia.	5
A1558	14 inch dia.	3
A1559	16 inch dia.	3
A1560	18 inch dia.	1
A1561	20 inch dia.	1
A1562	4 inch dia.	1

DAMPERS/DAMPER HARDWARE

DAMPERS

PART#	DESCRIPTION	PER PACK
D1304	4 inch dia.	1
D1305	5 inch dia.	1
D1306	6 inch dia.	1
D1307	7 inch dia.	1
D1308	8 inch dia.	1
D1309	9 inch dia.	1



PART#	DESCRIPTION	PER PACK
D1310	10 inch dia.	1
D1312	12 inch dia.	1
D1314	14 inch dia.	1
D1316	16 inch dia.	1
D1318	18 inch dia.	1
D1320	20 inch dia.	1



DUCT BOARD COLLARS A3600 SERIES (FOR R6 INSULATION)

DUCT BOARD COLLARS D3600 SERIES (FOR R6 INSULATION W/DAMPER)

PART#	DESCRIPTION	PER PACK
A3604	Start Collar (D.B) 4" R6	1
A3605	Start Collar (D.B) 5" R6	30
A3606	Start Collar (D.B) 6" R6	18
A3607	Start Collar (D.B) 7" R6	32
A3608	Start Collar (D.B) 8" R6	24
A3609	Start Collar (D.B) 9" R6	18
A3610	Start Collar (D.B) 10" R6	14
A3612	Start Collar (D.B) 12" R6	12
A3614	Start Collar (D.B) 14" R6	5
A3616	Start Collar (D.B) 16" R6	4
A3618	Start Collar (D.B) 18" R6	8
A3620	Start Collar (D.B) 20" R6	7

PART#	DESCRIPTION	PER PACK
D3604	Start Collar (D.B) 4" w/Damp R6	1
D3605	Start Collar (D.B) 5" w/Damp R6	30
D3606	Start Collar (D.B) 6" w/Damp R6	18
D3607	Start Collar (D.B) 7" w/Damp R6	32
D3608	Start Collar (D.B) 8" w/Damp R6	24
D3609	Start Collar (D.B) 9" w/Damp R6	18
D3610	Start Collar (D.B) 10" w/Damp R6	14
D3612	Start Collar (D.B) 12" w/Damp R6	12
D3614	Start Collar (D.B) 14" w/Damp R6	3
D3616	Start Collar (D.B) 16" w/Damp R6	3
D3618	Start Collar (D.B) 18" w/Damp R6	8
D3620	Start Collar (D.B) 20" w/Damp R6	1



TITeseal ADHESIVE COLLARS

TITeseal COLLARS- FLAT

PART#	DESCRIPTION	PER PACK
A3204	4" Titeseal- flat	1
A3205	5" Titeseal- flat	18
A3206	6" Titeseal- flat	36
A3207	7" Titeseal- flat	24
A3208	8" Titeseal- flat	18
A3209	9" Titeseal- flat	14
A3210	10" Titeseal- flat	12
A3212	12" Titeseal- flat	9
A3214	14" Titeseal- flat	6
A3216	16" Titeseal- flat	1
A3218	18" Titeseal- flat	1
A3220	20" Titeseal- flat	1



PHONE: (504) 835-7247 • FAX: (504) 835-6586

WWW.JOVAL.COM

TITSEAL COLLARS- FLAT W/DAMPER



PART#	DESCRIPTION	PER PACK
D3304	4" Titeseal- flat w/damper	36
D3305	5" Titeseal- flat w/damper	18
D3306	6" Titeseal- flat w/damper	36
D3307	7" Titeseal- flat w/damper	24
D3308	8" Titeseal- flat w/damper	18
D3309	9" Titeseal- flat w/damper	14
D3310	10" Titeseal- flat w/damper	12
D3312	12" Titeseal- flat w/damper	9
D3314	14" Titeseal- flat w/damper	6
D3316	16" Titeseal- flat w/damper	1
D3318	18" Titeseal- flat w/damper	1
D3320	20" Titeseal- flat w/damper	1

TITSEAL COLLARS- FLAT W/STANDOFF DAMPER

PART#	DESCRIPTION	PER PACK
D3304S	4" Titeseal- flat w/standoff damper	18
D3305S	5" Titeseal- flat w/standoff damper	18
D3306S	6" Titeseal- flat w/standoff damper	36
D3307S	7" Titeseal- flat w/standoff damper	24
D3308S	8" Titeseal- flat w/standoff damper	18
D3309S	9" Titeseal- flat w/standoff damper	14
D3310S	10" Titeseal- flat w/standoff damper	12
D3312S	12" Titeseal- flat w/standoff damper	9
D3314S	14" Titeseal- flat w/standoff damper	6
D3316S	16" Titeseal- flat w/standoff damper	1
D3318S	18" Titeseal- flat w/standoff damper	1
D3320S	20" Titeseal- flat w/standoff damper	1



TITSEAL COLLARS-SADDLE STYLE



PART#	DESCRIPTION	PER PACK
A3404	4" Titeseal-saddle	36
A3405	5" Titeseal-saddle	18
A3406	6" Titeseal-saddle	36
A3407	7" Titeseal-saddle	24
A3408	8" Titeseal-saddle	18
A3409	9" Titeseal-saddle	14
A3410	10" Titeseal-saddle	12
A3412	12" Titeseal-saddle	7

TITSEAL COLLARS – SADDLE W/DAMPER

PART#	DESCRIPTION	PER PACK
D3504	4" Titeseal-saddle w/damp	36
D3505	5" Titeseal-saddle w/damp	18
D3506	6" Titeseal-saddle w/damp	36
D3507	7" Titeseal-saddle w/damp	24
D3508	8" Titeseal-saddle w/damp	18
D3509	9" Titeseal-saddle w/damp	12
D3510	10" Titeseal-saddle w/damp	12
D3512	12" Titeseal-saddle w/damp	6



PHONE: (504) 835-7247 • FAX: (504) 835-6586

WWW.JOVAL.COM

JOVAL PLENUMS



Plenums for any HVAC application are now available in the high quality you've come to expect from Joval. Packaged in space saving boxes to protect against dirt and damage, clearly labeled with plenum size, they are produced according to your specifications.

Joval Plenums feature:

- 5 piece construction with button lock panels that are easily snapped together.
- High quality rotary duct liner available in R-4, R-6, or R-8.
- Liner secured to the panels with weld pins and water based glue

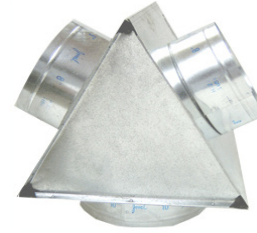


Please contact our sales staff for more information and pricing!

STANDARD INSULATED WYES-

R6 INSULATED WYES-1960 SERIES (1 1/2 INCH INSULATION)

PART#	DESCRIPTION	PER PACK
A1960121010	12"X10"X10" R6	4
A1961	7"X5"X5" R6	4
A1962	8"X6"X6" R6	4
A1963	9"X7"X7" R6	4
A1964	10"X8"X8" R6	4
A1965	12"X8"X8" R6	4
A1966	12"X10"X8" R6	4
A1967	14"X12"X8" R6	4



R8 INSULATED WYES- 1980 SERIES (2 INCH INSULATION)

PART#	DESCRIPTION	PER PACK
A1980121010	12"X10"X10" R8	4
A1981	7"X5"X5" R8	4
A1982	8"X6"X6" R8	4
A1983	9"X7"X7" R8	4
A1984	10"X8"X8" R8	4
A1985	12"X8"X8" R8	4
A1986	12"X10"X8" R8	4
A1987	14"X12"X8" R8	4

INDIVIDUAL PANELS

FOR ASSEMBLY OF CUSTOM INSULATED WYES & MIXING BOXES

R6 INSULATED PANELS (14"X14")



PART#	DESCRIPTION	PER PACK
A200106	R6 Square End	16
A200206	R6 Triangular End	16
A200306	R6 Plain Panel	16
A200406	R6 4" Collar	7
A200506	R6 5" Collar	7
A200606	R6 6" Collar	7
A200706	R6 7" Collar	7
A200806	R6 8" Collar	7
A200906	R6 9" Collar	7
A201006	R6 10" Collar	7
A201206	R6 12" Collar	7

#4 R8 INSULATED PANELS (14"X14")

PART#	DESCRIPTION	PER PACK
A200108	R8 Square End	16
A200208	R8 Triangular End	16
A200308	R8 Plain Panel	16
A200408	R8 4" Collar	7
A200508	R8 5" Collar	7
A200608	R8 6" Collar	7
A200708	R8 7" Collar	7
A200808	R8 8" Collar	7
A200908	R8 9" Collar	7
A201008	R8 10" Collar	7
A201208	R8 12" Collar	7



**

16" x 16" PANELS 18" X 18"
PANELS ARE AVAILABLE AS
SPECIAL ORDERS. PLEASE
CALL US FOR DETAILS AND
PRICING.

PHONE: (504) 835-7247 • FAX: (504) 835-6586

WWW.JOVAL.COM

INSULATED BOXES

INSULATED BOXES (R4 TOP TAP)

PART#	DESCRIPTION	PER PACK	PART#	DESCRIPTION	PER PACK
A2501	06" X 06" - 05"	24	A2516	12" X 12" - 10"	12
A2502	08" X 04" - 05"	20	A2517	14" X 06" - 08"	12
A2503	08" X 08" - 06"	16	A2518	14" X 14" - 10"	6
A2504	08" X 08" - 07"	16	A2519	06" X 06" - 06"	24
A2505	08" X 08" - 08"	16	A2520	08" X 06" - 06"	14
A2506	10" X 06" - 05"	20	A2521	10" X 08" - 06"	12
A2507	10" X 06" - 06"	20	A2522	10" X 10" - 09"	12
A2508	10" X 06" - 07"	15	A2523	10" X 10" - 10"	12
A2509	10" X 10" - 07"	12	A2524	12" X 06" - 08"	15
A2510	10" X 10" - 08"	15	A2525	14" X 06" - 07"	12
A2511	12" X 06" - 06"	12	A2526	14" X 08" - 09"	12
A2512	12" X 06" - 07"	15	A2527	12" X 12" - 12"	10
A2513	12" X 08" - 08"	12	A2528	14" X 14" - 09"	6
A2514	12" X 12" - 08"	12	A2529	14" X 14" - 12"	6
A2515	12" X 12" - 09"	12	A2599	Rails for ins. boxes	150

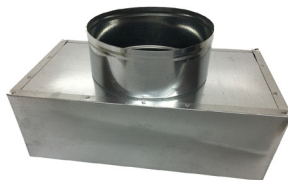


INSULATED BOXES (R6 TOP TAP)

PART#	DESCRIPTION	PER PACK	PART#	DESCRIPTION	PER PACK
A2600060604	06 x 06 - 04 R6	24	A2613	12 x 08 - 08 R6	12
A2600101006	10 x 10 - 06 R6	12	A2614	12 x 12 - 08 R6	12
A2600120809	12 x 08 - 09 R6	12	A2615	12 X 12-09 R6	12
A2600121207	12 x 12 - 07 R6	12	A2616	12 x 12 - 10 R6	12
A2601	06 x 06 - 05 R6	24	A2617	14 x 06 - 08 R6	12
A2602	08 x 04 - 05 R6	20	A2618	14 x 14 - 10 R6	6
A2603	08 x 08 - 06 R6	16	A2619	06 x 06 - 06 R6	24
A2604	08 x 08 - 07 R6	16	A2620	08 x 06 - 06 R6	14
A2605	08 x 08 - 08 R6	16	A2621	10 x 08 - 06 R6	12
A2606	10 x 06 - 05 R6	20	A2622	10 x 10 - 09 R6	12
A2607	10 x 06 - 06 R6	20	A2623	10 x 10 - 10 R6	12
A2608	10 x 06 - 07 R6	15	A2624	12 x 06 - 08 R6	15
A2609	10 x 10 - 07 R6	12	A2625	14 x 06 - 07 R6	12
A2610	10 x 10 - 08 R6	12	A2626	14 x 08 - 09 R6	12
A2611	12 x 06 - 06 R6	15	A2627	12 x 12 - 12 R6	10
A2612	12 x 06 - 07 R6	15	A2628	14 x 14 - 09 R6	6
			A2629	14 x 14 - 12 R6	6

INSULATED BOXES (R6 TOP TAP NO FLANGE)

PART#	DESCRIPTION	PER PACK	PART#	DESCRIPTION	PER PACK
A2701	06"X 06"-05"	24	A2715	12" X 12" - 09"	12
A2702	08" X 04"-05"	20	A2716	12" X 12" - 10"	12
A2703	08" X 08" - 06"	16	A2717	14"X 06" - 08"	12
A2704	08" X 08" -07"	16	A2718	14"X14" - 10"	6
A2705	08" X 08" - 08"	16	A2719	06" X 06"- 06"	24
A2706	10" X 06" - 05"	20	A2720	08" X 06"- 06"	14
A2707	10" X 06" - 06"	20	A2721	10" X 08"- 06"	12
A2708	10" X 06"- 07"	15	A2722	10" X 10" - 09"	12
A2709	10" X 10" - 07"	12	A2723	10" X 10" - 10"	12
A2710	10" X 10" -08"	12	A2724	12" X 06" - 08"	15
A2711	12" X 06" - 06"	20	A2725	14" X 06" - 07"	12
A2712	12" X 06" - 07"	15	A2726	14" X 08" - 09"	12
A2713	12" X 08" - 08"	12	A2727	12" X 12" -12"	10
A2714	12" X 12" - 08"	12	A2728	14" X 14"- 09"	6
			A2729	14" X 14" - 12"	6



PHONE: (504) 835-7247 • FAX: (504) 835-6586

WWW.JOVAL.COM

INSULATED BOXES (R4 TOP TAP NO FLANGE)

PART#	DESCRIPTION	PER PACK	PART#	DESCRIPTION	PER PACK
A2901	06" X 06"-05"	24	A2916	12" X 12"-10"	12
A2902	08" X 04"-05"	20	A2917	14" X 06"-08"	12
A2903	08" X 08" - 06"	16	A2918	14" X 14" - 10"	6
A2904	08" X 08" -07"	16	A2919	06" X 06" -06"	24
A2905	08" X 08" - 08"	16	A2920	08" X 06" - 06"	14
A2906	10" X 06" - 05"	20	A2921	10" X 08" - 06"	12
A2907	10" X 06" - 06"	20	A2922	10" X 10" - 09"	12
A2908	10" X 06" - 07"	15	A2923	10" X 10" - 10"	12
A2909	10" X 10" - 07"	12	A2924	12" X 06" - 08"	15
A2910	10" X 10" -08"	12	A2925	14" X 06" -07"	12
A2911	12" X 06" - 06"	20	A2926	14" X 08" - 09"	10
A2912	12" X 06" - 07"	15	A2927	12" X 12" - 12"	10
A2913	12" X 08" - 08"	12	A2928	14" X 14" - 09"	6
A2914	12" X 12" - 08"	12	A2929	14" X 14" - 12"	6
A2915	12" X 12" - 09	12			

INSULATED BOXES (R4 NO TAP)

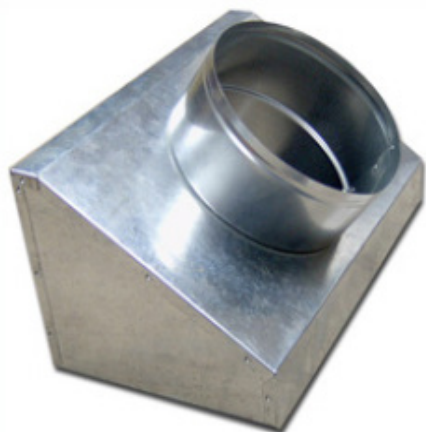
PART#	DESCRIPTION	PER PACK
A5000060600	06" X 06"	15
A5000080400	08" X 04"	20
A5000080800	08" X 08"	15
A5000100600	10" X 06"	15
A5000101000	10" X 10"	12
A5000120600	12" X 06"	12
A5000120800	12" X 08"	12
A5000121200	12" X 12"	1
A5000140600	14" X 06"	1
A5000140800	14" X 08"	1
A5000141400	14" X 14"	1

INSULATED BOXES (R4 SIDE TAP)

PART#	DESCRIPTION	PER PACK
A5001	06" X 06" - 05"	12
A5002	08" X 04" - 05"	15
A5003	08" X 08" - 06"	15
A5004	08" X 08" - 07"	15
A5005	08" X 08" - 08"	15
A5007	10" X 06" - 06"	12
A5009	10" X 10" - 07"	9
A5010	10" X 10" - 08"	12
A5012	12" X 06" - 07"	12
A5014	12" X 12" - 08"	8
A5015	12" X 12" - 09"	8
A5017	14" X 06" - 08"	12
A5018	14" X 14" - 10"	1
A5019	06" X 06" - 06"	12
A5024	12" X 06" - 08"	12

SLANT TOP BOXES

ALL SLANT TOP BOXES ARE AT A FIXED ANGLE OF 30 DEGREES



R4 INSULATION

PART#	DESCRIPTION	PER PACK
A5302	8" x 4" - 5"	20
A5307	10" x 6" - 6"	20
A5312	12" x 6" -7"	15
A5313	12" x 8" - 8"	12
A5317	14" x 6" - 8"	10
A5324	12" X 6" - 8"	16

R6 INSULATION

PART#	DESCRIPTION	PER PACK
A5202	8" x 4" - 5"	20
A5207	10" x 6" - 6"	20
A5212	12" x 6" -7"	15
A5217	14" x 6" - 8"	10
A5224	12" X 6" - 8"	16

PHONE: (504) 835-7247 • FAX: (504) 835-6586

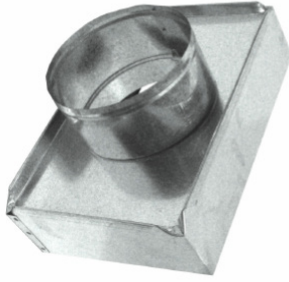
WWW.JOVAL.COM

INSULATED BOXES

(4" TOP TAP R4 NO FLANGE)

(4" TOP TAP R4 BOTTOM FLANGE)

PART#	DESCRIPTION	PER PACK
A5401	06"X 06"-05"	24
A5402	08" X 04"-05"	30
A5403	08" X 08" - 06"	16
A5404	08" X 08" -07"	16
A5405	08" X 08" - 08"	16
A5406	10" X 06" - 05"	25
A5407	10" X 06" - 06"	25
A5408	10" X 06" - 07"	15
A5409	10" X 10" - 07"	12
A5410	10" X 10" -08"	12
A5411	12" X 06" - 06"	25
A5412	12" X 06" - 07"	20
A5413	12" X 08" - 08"	12
A5414	12" X 12" - 08"	10
A5415	12" X 12" - 09	10
A5416	12" X 12" - 10"	10
A5417	14"X 06" - 08"	16
A5418	14"X14"- 10"	6
A5419	06" X 06"- 06"	24
A5420	08" X 06"- 06"	14
A5421	10" X 08"- 06"	12
A5422	10" X 10" - 09"	12
A5423	10" X 10" - 10"	12
A5424	12" X 06" - 08"	20
A5425	14" X 06" - 07"	10
A5426	14" X 08" - 09"	10
A5427	12" X 12" -12"	10
A5428	14" X 14"- 09"	6
A5429	14" X 14" - 12"	6



PART#	DESCRIPTION	PER PACK
A5501	06"X 06"-05"	24
A5502	08" X 04"-05"	30
A5503	08" X 08" - 06"	16
A5504	08" X 08" -07"	16
A5505	08" X 08" - 08"	16
A5506	10" X 06" - 05"	25
A5507	10" X 06" - 06"	25
A5508	10" X 06" - 07"	15
A5509	10" X 10" - 07"	12
A5510	10" X 10" -08"	12
A5511	12" X 06" - 06"	25
A5512	12" X 06" - 07"	20
A5513	12" X 08" - 08"	12
A5514	12" X 12" - 08"	10
A5515	12" X 12" - 09	10
A5516	12" X 12" - 10"	10
A5517	14"X 06" - 08"	16
A5518	14"X14"- 10"	6
A5519	06" X 06"- 06"	24
A5520	08" X 06"- 06"	14
A5521	10" X 08"- 06"	12
A5522	10" X 10" - 09"	12
A5523	10" X 10" - 10"	12
A5524	12" X 06" - 08"	20
A5525	14" X 06" - 07"	10
A5526	14" X 08" - 09"	10
A5527	12" X 12" -12"	10
A5528	14" X 14"- 09"	6
A5529	14" X 14" - 12"	6

INSULATED BOXES (R6 SIDE TAP)

PART#	DESCRIPTION	PER PACK
A5601	06x06-05 R6	12
A5602	08x04-05 R6	15
A5603	08x08-06 R6	15
A5604	08x08-07 R6	15
A5605	08x08-08 R6	15
A5607	10x06-06 R6	12
A5608	10x06-07 R6	12
A5609	10x10-07 R6	12
A5610	10x10-08 R6	12
A5611	12x06-06 R6	12
A5612	12x06-07 R6	12
A5614	12x12-08 R6	8
A5615	12x12-09 R6	6
A5617	14x06-08 R6	12
A5618	14x14-10 R6	1
A5619	06x06-06 R6	12
A5624	12x06-08 R6	12



INSULATED BOXES (R6 NO TAP)

PART#	DESCRIPTION	PER PACK
A5600060600	06x06-00 R6	12
A5600080400	08x04-00 R6	20
A5600080800	08x08-00 R6	15
A5600100600	10x06-00 R6	12
A5600101000	10x10-00 R6	12
A5600120600	12x06-00 R6	12
A5600120800	12x08-00 R6	8
A5600121200	12x12-00 R6	8
A5600140600	14x06-00 R6	1
A5600140800	14x08-00 R6	9
A5600141400	14x14-00 R6	1

PHONE: (504) 835-7247 • FAX: (504) 835-6586

WWW.JOVAL.COM

NOW FROM JOVAL FACTORY SEALED BOXES



Sealed on the inside!
 Don't spend your time painting the box!
 No Mess.
 No waiting for it to dry.
 Sealed with UL181 approved sealant.
 Ask your supplier about a quote today!



INSULATED BOXES (R4 END TAP)

PART#	DESCRIPTION	PER PACK
A6002	08" X 04" - 05"	15
A6007	10" X 06" - 06"	15
A6011	12" X 06" - 06"	12
A6012	12" X 06" - 07"	12
A6017	14" X 06" - 08"	10
A6024	12" X 06" - 08"	12

INSULATED BOXES (R6 END TAP)

PART#	DESCRIPTION	PER PACK
A6602	08x04-05 R6	15
A6607	10x06-06 R6	12
A6611	12x06-06 R6	12
A6612	12x06-07 R6	12
A6617	14x06-08 R6	10
A6624	12x06-08 R6	12

FACTORY SEALED INSULATED BOXES (R6 TOP TAP)

PART #	DESCRIPTION	PER PACK
A2601FS	Ins. Box Top Tap Sealed 06 x 06 - 05 R6	24
A2602FS	Ins. Box Top Tap Sealed 08 x 04 - 05 R6	20
A2603FS	Ins. Box Top Tap Sealed 08 x 08 - 06 R6	16
A2604FS	Ins. Box Top Tap Sealed 08 x 08 - 07 R6	16
A2605FS	Ins. Box Top Tap Sealed 08 x 08 - 08 R6	16
A2606FS	Ins. Box Top Tap Sealed 10 x 06 - 05 R6	20
A2607FS	Ins. Box Top Tap Sealed 10 x 06 - 06 R6	20
A2608FS	Ins. Box Top Tap Sealed 10 x 06 - 07 R6	15
A2609FS	Ins. Box Top Tap Sealed 10 x 10 - 07 R6	12
A2610FS	Ins. Box Top Tap Sealed 10 x 10 - 08 R6	12
A2611FS	Ins. Box Top Tap Sealed 12 x 06 - 06 R6	15
A2612FS	Ins. Box Top Tap Sealed 12 x 06 - 07 R6	15
A2613FS	Ins. Box Top Tap Sealed 12 x 08 - 08 R6	12
A2614FS	Ins. Box Top Tap Sealed 12 x 12 - 08 R6	12
A2615FS	Ins. Box Top Tap Sealed 12 X 12-09 R6	12
A2616FS	Ins. Box Top Tap Sealed 12 x 12 - 10 R6	12
A2617FS	Ins. Box Top Tap Sealed 14 x 06 - 08 R6	12
A2618FS	Ins. Box Top Tap Sealed 14 x 14 - 10 R6	6
A2619FS	Ins. Box Top Tap Sealed 06 x 06 - 06 R6	24
A2620FS	Ins. Box Top Tap Sealed 08 x 06 - 06 R6	14
A2621FS	Ins. Box Top Tap Sealed 10 x 08 - 06 R6	12
A2622FS	Ins. Box Top Tap Sealed 10 x 10 - 09 R6	12
A2623FS	Ins. Box Top Tap Sealed 10 x 10 - 10 R6	12
A2624FS	Ins. Box Top Tap Sealed 12 x 06 - 08 R6	15
A2625FS	Ins. Box Top Tap Sealed 14 x 06 - 07 R6	12
A2626FS	Ins. Box Top Tap Sealed 14 x 08 - 09 R6	12
A2627FS	Ins. Box Top Tap Sealed 12 x 12 - 12 R6	10
A2628FS	Ins. Box Top Tap Sealed 4 x 14 - 09 R6	6
A2629FS	Ins. Box Top Tap Sealed 14 x 14 - 12 R6	6

FACTORY SEALED INSULATED BOXES (R6 SIDE TAP)

A5601FS	Ins. Box Side Tap Sealed 06x06-05 R6	12
A5602FS	Ins. Box Side Tap Sealed 08x04-05 R6	15
A5603FS	Ins. Box Side Tap Sealed 08x08-06 R6	15
A5604FS	Ins. Box Side Tap Sealed 08x08-07 R6	15
A5605FS	Ins. Box Side Tap Sealed 08x08-08 R6	15
A5607FS	Ins. Box Side Tap Sealed 10x06-06 R6	12
A5608FS	Ins. Box Side Tap Sealed 10x06-07 R6	12
A5609FS	Ins. Box Side Tap Sealed 10x10-07 R6	12
A5610FS	Ins. Box Side Tap Sealed 10x10-08 R6	12
A5611FS	Ins. Box Side Tap Sealed 12x06-06 R6	12
A5612FS	Ins. Box Side Tap Sealed 12x06-07 R6	12
A5614FS	Ins. Box Side Tap Sealed 12x12-08 R6	8
A5615FS	Ins. Box Side Tap Sealed 12x12-09 R6	6
A5617FS	Ins. Box Side Tap Sealed 14x06-08 R6	12
A5618FS	Ins. Box Side Tap Sealed 14x14-10 R6	1
A5619FS	Ins. Box Side Tap Sealed 06x06-06 R6	12
A5624FS	Ins. Box Side Tap Sealed 12x06-08 R6	12

FACTORY SESALED INSULATED BOXES (R6 END TAP)

A6602FS	Ins Box End Tap Sealed 08x04-05 R6	15
A6607FS	Ins Box End Tap Sealed 10x06-06 R6	12
A6611FS	Ins Box End Tap Sealed 12x06-06 R6	12
A6612FS	Ins Box End Tap Sealed 12x06-07 R6	12
A6617FS	Ins Box End Tap Sealed 14x06-08 R6	10
A6624FS	Ins Box End Tap Sealed 12x06-08 R6	12
A6602FS	Ins Box End Tap Sealed 08x04x05 R6	15

DAMPER HARDWARE

PART#	DESCRIPTION	PER PACK
DDSB	SPRING BEARING	100
DDTB	THREADED BEARING	100
DDRH	RAPID HANDLE	100
DDWN	WING NUT	100



FRESH AIR/DRYER VENTS AND HOODS



Wall vent

PART#	DESCRIPTION	PER PACK
DV500	5" dia.	1
DV600	6" dia.	1
DV700	7" dia.	1
DV800	8" dia.	1
DV1000	10" dia	1
DVH4A	Dryer vent hood- alum. 4"	12
DHC04	4" Dryer hose clamps	50
DH45A	Dryer hose 4"X5' Alum.	6
V5310C	Wall Vent- 5"X3" w/cleanout & adapter	1



V5310C 5"x3" Vent with cleanout and cap

CONDUCTOR PIPE

AVAILABLE IN PLAIN ROUND ONLY



STAND OFF BRACKETS

3"-6" ADJUSTABLE

FOR SINGLE WALL AND DOUBLE WALL PIPE

PART# SB200 100 PER PACK



C3811	Cond. Pipe 3" 28 Ga. 10'
C4811	Cond. Pipe 4" 28 Ga. 10'
C5811	Cond. Pipe 5" 28 Ga. 10'
C3611	Cond. Pipe 3" 26 Ga. 10'
C4611	Cond. Pipe 4" 26 Ga. 10'

CONDUCTOR ELBOWS

PLAIN ROUND CONDUCTOR ELBOWS



#1-45°



#2-60°

2"
3"
4"
5"
6"



#3-75°



#4-90°

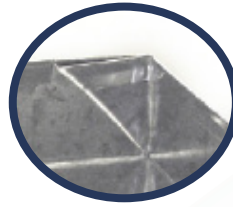
PART#	DESCRIPTION	PER PACK
E21PR	Ells 2" #1 Pl. Rd.	20
E22PR	Ells 2" #2 Pl. Rd.	20
E23PR	Ells 2" #3 Pl. Rd.	20
E24PR	Ells 2" #4 Pl. Rd.	20
E31PR	Ells 3" #1 Pl. Rd.	20
E32PR	Ells 3" #2 Pl. Rd.	20
E33PR	Ells 3" #3 Pl. Rd.	20
E34PR	Ells 3" #4 Pl. Rd.	20
E41PR	Ells 4" #1 Pl. Rd.	20
E42PR	Ells 4" #2 Pl. Rd.	20
E43PR	Ells 4" #3 Pl. Rd.	20
E44PR	Ells 4" #4 Pl. Rd.	20
E51PR	Ells 5" #1 Pl. Rd.	10
E52PR	Ells 5" #2 Pl. Rd.	10
E53PR	Ells 5" #3 Pl. Rd.	10
E54PR	Ells 5" #4 Pl. Rd.	10
E61PR	Ells 6" #1 Pl. Rd.	10
E62PR	Ells 6" #2 Pl. Rd.	10
E63PR	Ells 6" #3 Pl. Rd.	10
E64PR	Ells 6" #4 Pl. Rd.	10

PHONE: (504) 835-7247 • FAX: (504) 835-6586

WWW.JOVAL.COM

PANS

We can manufacture almost any size, with any fitting needed for your application. Please call us for pricing and lead time on all special orders.



Now available with folded corner seams!!

All pans are available with 3/4" or 1" PVC FPT drain fittings or steel nipples, with welded or lead free folded corner seams. Please specify when ordering.



WATER HEATER PANS

Options	26 gauge
Corners	welded, folded or soldered
Drain Options	1" pvc glue 1" pvc thread
Wall Height	4"

CONDENSATE SAFETY PANS

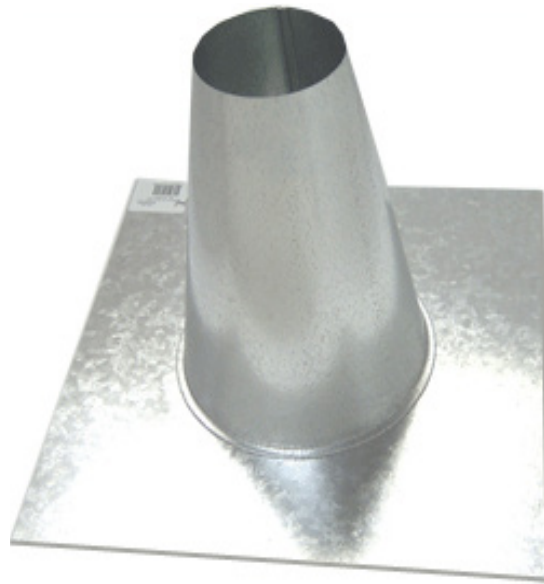
Options	26 gauge	24 gauge	22 gauge
Corners	welded, folded or soldered	welded, folded or soldered	welded
Drain Options	3/4" pvc thread 3/4" metal nipple 3/4" pvc glue	3/4" pvc thread 3/4" metal nipple 3/4" pvc glue	3/4" metal nipple
Wall Height	1 1/2" 2" 3"	1 1/2" 2" 3"	2"

PHONE: (504) 835-7247 • FAX: (504) 835-6586

WWW.JOVAL.COM

ROOF FLANGES

PART#	DESCRIPTION	PER PACK
F0300	3" FLAT	1
F0301	3" 1/12 pitch	1
F0302	3" 2/12 pitch	1
F0303	3" 3/12 pitch	1
F0304	3" 4/12 pitch	1
F0305	3" 5/12 pitch	1
F0306	3" 6/12 pitch	1
F0307	3" 7/12 pitch	1
F0308	3" 8/12 pitch	1
F0309	3" 9/12 pitch	1
F0310	3" 10/12 pitch	1
F0311	3" 11/12 pitch	1
F0312	3" 12/12 pitch	1
F0400	4" FLAT	1
F0401	4" 1/12 pitch	1
F0402	4" 2/12 pitch	1
F0403	4" 3/12 pitch	1
F0404	4" 4/12 pitch	1
F0405	4" 5/12 pitch	1
F0406	4" 6/12 pitch	1
F0407	4" 7/12 pitch	1
F0408	4" 8/12 pitch	1
F0409	4" 9/12 pitch	1
F0410	4" 10/12 pitch	1
F0411	4" 11/12 pitch	1
F0412	4" 12/12 pitch	1
F0500	5" FLAT	1
F0501	5" 1/12 pitch	1
F0502	5" 2/12 pitch	1
F0503	5" 3/12 pitch	1
F0504	5" 4/12 pitch	1
F0505	5" 5/12 pitch	1
F0506	5" 6/12 pitch	1
F0507	5" 7/12 pitch	1
F0508	5" 8/12 pitch	1
F0509	5" 9/12 pitch	1
F0510	5" 10/12 pitch	1
F0511	5" 11/12 pitch	1
F0512	5" 12/12 pitch	1
F0600	6" FLAT	1
F0601	6" 1/12 pitch	1
F0602	6" 2/12 pitch	1
F0603	6" 3/12 pitch	1
F0604	6" 4/12 pitch	1
F0605	6" 5/12 pitch	1
F0606	6" 6/12 pitch	1
F0607	6" 7/12 pitch	1
F0608	6" 8/12 pitch	1



PART#	DESCRIPTION	PER PACK
F0609	6" 9/12 pitch	1
F0610	6" 10/12 pitch	1
F0611	6" 11/12 pitch	1
F0612	6" 12/12 pitch	1
F0700	7" FLAT	1
F0701	7" 1/12 pitch	1
F0702	7" 2/12 pitch	1
F0703	7" 3/12 pitch	1
F0704	7" 4/12 pitch	1
F0705	7" 5/12 pitch	1
F0706	7" 6/12 pitch	1
F0707	7" 7/12 pitch	1
F0708	7" 8/12 pitch	1
F0709	7" 9/12 pitch	1
F0710	7" 10/12 pitch	1
F0711	7" 11/12 pitch	1
F0712	7" 12/12 pitch	1
F0800	8" FLAT	1
F0801	8" 1/12 pitch	1
F0802	8" 2/12 pitch	1
F0803	8" 3/12 pitch	1
F0804	8" 4/12 pitch	1
F0805	8" 5/12 pitch	1
F0806	8" 6/12 pitch	1
F0807	8" 7/12 pitch	1
F0808	8" 8/12 pitch	1
F0809	8" 9/12 pitch	1

PART#	DESCRIPTION	PER PACK
F0810	8" 10/12 pitch	1
F0811	8" 11/12 pitch	1
F0812	8" 12/12 pitch	1
F1000	10" FLAT	1
F1001	10" 1/12 pitch	1
F1002	10" 2/12 pitch	1
F1003	10" 3/12 pitch	1
F1004	10" 4/12 pitch	1
F1005	10" 5/12 pitch	1
F1006	10" 6/12 pitch	1
F1007	10" 7/12 pitch	1
F1008	10" 8/12 pitch	1
F1009	10" 9/12 pitch	1
F1010	10" 10/12 pitch	1
F1011	10" 11/12 pitch	1
F1012	10" 12/12 pitch	1
F1200	12" FLAT	1
F1201	12" 1/12 pitch	1
F1202	12" 2/12 pitch	1
F1203	12" 3/12 pitch	1
F1204	12" 4/12 pitch	1
F1205	12" 5/12 pitch	1
F1206	12" 6/12 pitch	1
F1207	12" 7/12 pitch	1
F1208	12" 8/12 pitch	1
F1209	12" 9/12 pitch	1
F1210	12" 10/12 pitch	1
F1211	12" 11/12 pitch	1
F1212	12" 12/12 pitch	1
F1400	14" FLAT	1



Combination jacks available!
Please specify when ordering.



Wind band caps on Page 28!

LOW PROFILE ROOF VENTS

For Kitchen or Bath Exhaust

PART#	DESCRIPTION	PER PACK
F4000D	VENT 4" TYPE F- W/DAMPER	24
F4100	VENT 4" TYPE F- W/4" EXT. COLLAR	1
F7000	VENT 7" TYPE F- LOW PROFILE	21
F9100	VENT 9" TYPE F- LOW PROFILE	21



F9100-9" VENT



F4100- W/4" EXT COL.



F4000D-4" VENT

PHONE: (504) 835-7247 • FAX: (504) 835-6586

WWW.JOVAL.COM

HALF ROUND GUTTER

PART#	DESCRIPTION	PER PACK
GUTTER		
H5610	Gutter, 5" H. R. 26 Ga. 10'	10
H6610	Gutter, 6" H. R. 26 Ga. 10'	10
H7610	Gutter, 7" H. R. 26 Ga. 10'	10
H8610	Gutter, 8" H. R. 26 Ga. 10'	10
MITERS		
H5MIS	Miter, 5" H. R. Inside Galv.	20
H5MUS	Miter, 5" H. R. Outside Galv.	20
H6MIS	Miter, 6" H. R. Inside Galv.	20
H6MUS	Miter, 6" H. R. Outside Galv.	20
STRAPS		
H5GHA	Strap, 5" H.R. Gutter Hanger	60
H6GHA	Strap, 6" H.R. Gutter Hanger	60
H7GHA	Strap, 7" H. R. Gutter Hanger	48
H8GHA	Strap, 8" H.R. Gutter Hanger	36
CONNECTORS		
H5SJC	Connector, 5" H. R. Slip Jt.	50
H6SJC	Connector, 6" H. R. Slip Joint	50
DROPS		
H3RDD	Drop, 3" Rd. For H. R. Gutter	50
H4RDD	Drop, 4" Rd. For H. R. Gutter	50
END CAPS		
H5SPL	End Cap, 5" H. R. Slip Galv.	50
H6SPL	End Cap, 6" H. R. Slip Galv.	50
END SECTIONS (W/DROP)		
H53ES	End Section, 5" H. R. w/Drop	20
H64ES	End Section, 6" H. R. w/Drop	20
WIRE/STRAP HANGERS		
HWIRE-BX	Wire, 18Ga/HR Strap Hangar/BX	1
HWIRE-EA	Wire, 18Ga/HR Strap Hangar/EA	1



HALF ROUND GUTTER



HALF ROUND OUTSIDE MITER



HALF ROUND END CAP



HALF ROUND END WITH DROP



HALF ROUND DROP

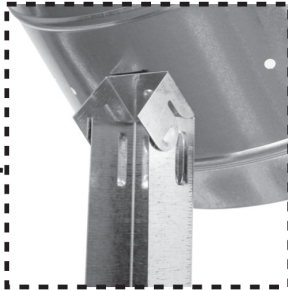
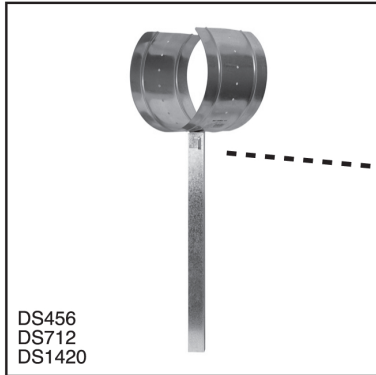
GUTTER SEAL

HGS50 Huron Gutter Seal 5oz (pictured)



PHONE: (504) 835-7247 • FAX: (504) 835-6586
WWW.JOVAL.COM

DUCT SADDLE



THE DUCT SADDLE:

- **HOLDS FLEXIBLE DUCTS STRAIGHT**
- **ALLOWS DUCTS TO CARRY FULL VOLUME OF AIR**
- **ELIMINATES KINKING & SAGGING WHICH PRODUCES FRICTION
THUS CAUSING THE MOTOR TO USE MORE ENERGY**
- **REDUCES THE RISKS ASSOCIATED WITH EXCESSIVE
ATTIC LADDER CLIMBING**
- **REDUCES THE AREAS WHERE CONDENSATION COLLECTS**
- **PREVENTS INTERFERENCE WITH THE DUCT'S THERMAL
ABILITIES WHICH ARE NORMALLY HINDERED BY
SPRAYED INSULATION**
- **ELEVATES DUCTS & HELPS PREVENT CONDENSATION
ON THE OUTER JACKET**
- **ELIMINATES THE USE OF AN ELBOW AT
THE PRE-INSULATED BOX**

**FOR SALES OR A LIST OF
LOCAL DISTRIBUTORS CONTACT:**



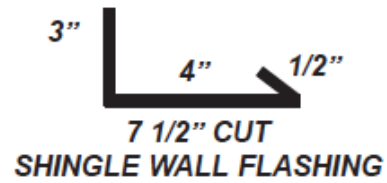
Joval
**MANUFACTURING
COMPANY, INC.**

**120 IRIS AVE.
JEFFERSON, LA 70121
PH. (504) 835-7247
FAX (504) 835-6586
SALES@JOVAL.COM
WWW.JOVAL.COM**

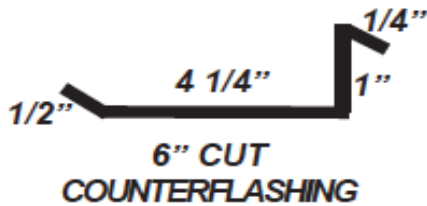
ROOF FLASHINGS



- R76BW Built Up wall flashing 26 ga 10'
- R78BW Built Up wall flashing 28 ga 10'



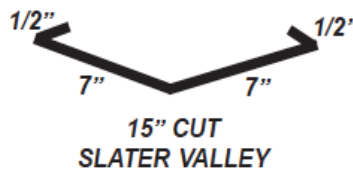
- R76SH Shingle wall flashing 7.5" 26 ga 10'
- R78SH Shingle wall flashing 7.5" 28 ga 10'



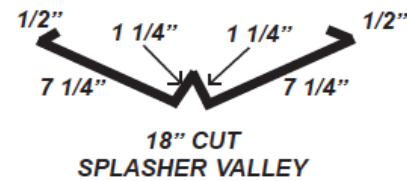
- R18CO Counter Flashing 11" 28 ga 10'
- R66CO Counter Flashing 6" 26 ga 10'
- R68CO Counter Flashing 6" 28 ga 10'
- R78CO Counter Flashing 7.5" 28 ga 10'



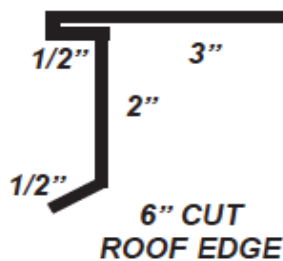
- R76AP Dormer Apron Flashing 7.5" 26 ga 10'
- R78AP Dormer Apron Flashing 7.5" 28 ga 10'



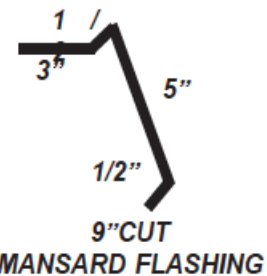
- R56SL 15" Slater Valley 26 ga 10'
- R58SL 15" Slater Valley 28 ga 10'



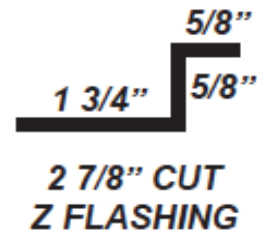
- R86SP 18" Splasher Valley 26 ga 10'



- R66RE Roof Edge 6" 26 ga 10'
- R68RE Roof Edge 6" 28 ga 10'
- R76RE Roof Edge 7" 26 ga 10'
- R78RE Roof Edge 7" 28 ga 10'



- R98MA Mansard Flashing 9" 28 ga 10'

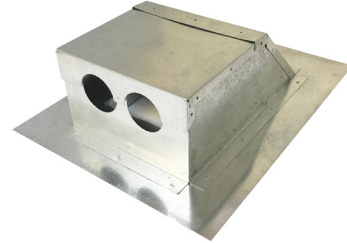
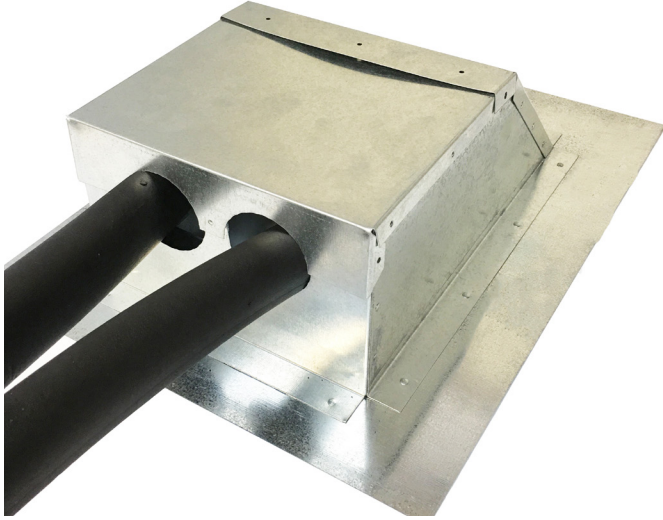


- R38OZ 3" 'Z' Flashing 28 ga 10'

NEW FROM JOVAL!

LOW PROFILE LINE VENTS

Designed for freon lines, power supply lines, or any plumbing lines you need to run
Contact us for pricing

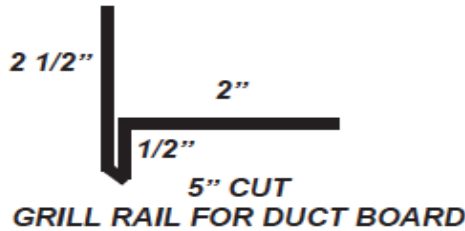


Removable cover for easy customization and installation

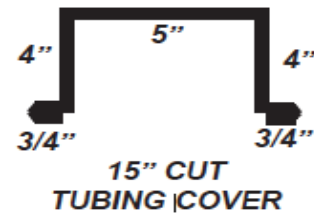


Part Number
F86RLS- Flange 8"x6" Refrig Line Set

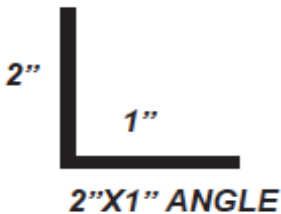
HVAC INSTALLATION ACCESSORIES



R50GR Grill Rail 5" 30 ga 10'



TUBEC Tubing Cover 4"x5"x4" 28 ga 10'



R34AN Angle 1"x2" 24 ga 10'
R38AN Angle 1"x2" 28 ga 10'
R48AN Angle 2"x2" 28 ga 10'



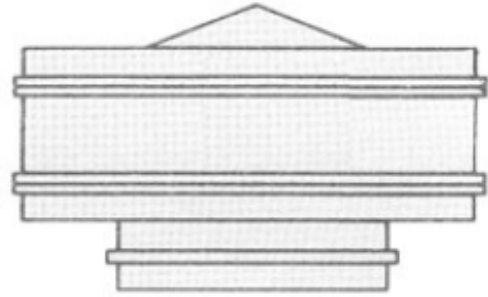
R18FC Filter Channel 1" 28 ga 10'
R28FC Filter Channel 2" 28 ga 10'
R34FC Filter Channel 3" 24 ga 10'

PHONE: (504) 835-7247 • FAX: (504) 835-6586

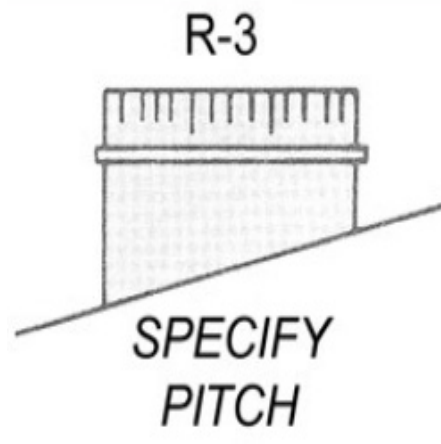
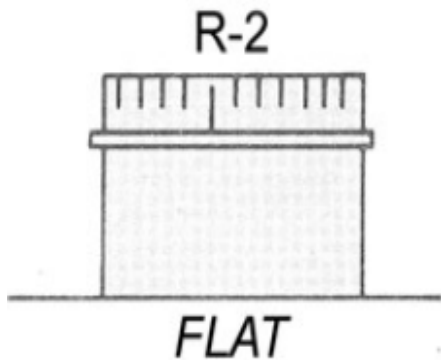
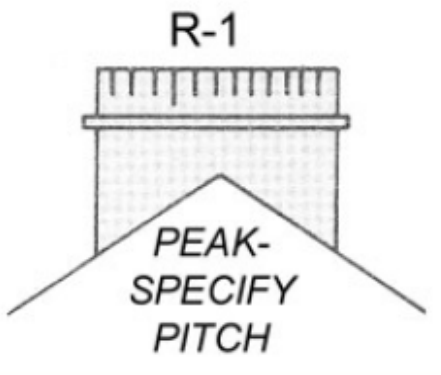
WWW.JOVAL.COM

STATIONARY VENTILATORS

PART#	DESCRIPTION	PER PACK
W1400	Type 'W' Vent Cap 14"	1
W1600	Type 'W' Vent Cap 16"	1
W1800	Type 'W' Vent Cap 18"	1
W2000	Type 'W' Vent Cap 20"	1
W2400	Type 'W' Vent Cap 24"	1
W3000	Type 'W' Vent Cap 30"	1
W3600	Type 'W' Vent Cap 36"	1



FIXED PITCH VENTILATOR BASES



PART#	DESCRIPTION	PER PACK
Q0600	Turbine Base 6" Flat R2	1
Q0800	Turbine Base 8" Flat R2	1
Q1000	Turbine Base 10" Flat R2	1
Q1200	Turbine Base 12" Flat R2	1
Q1400	Turbine Base 14" Flat R2	1
Q1600	Turbine Base 16" Flat R2 1	1
Q1800	Turbine Base 18" Flat R2 1	1
Q2000	Turbine Base 20" Flat R2 1	1
Q2400	Turbine Base 24" Flat R2 1	1
Q3000	Turbine Base 30" Flat R2 1	1
Q3600	Turbine Base 36" Flat R2 1	1
Q0600R1	Turbine Base 6" Ridge R1 1	1
Q0800R1	Turbine Base 8" Ridge R1 1	1
Q1000R1	Turbine Base 10" Ridge R1 1	1
Q1200R1	Turbine Base 12" Ridge R1 1	1
Q1400R1	Turbine Base 14" Ridge R1 1	1
Q1600R1	Turbine Base 16" Ridge R1 1	1
Q1800R1	Turbine Base 18" Ridge R1 1	1
Q2000R1	Turbine Base 20" Ridge R1 1	1
Q2400R1	Turbine Base 24" Ridge R1 1	1
Q3000R1	Turbine Base 30" Ridge R1 1	1
Q3600R1	Turbine Base 36" Ridge R1 1	1
Q0600R3	Turbine Base 6" Pitched R3 1	1
Q0800R3	Turbine Base 8" Pitched R3 1	1
Q1000R3	Turbine Base 10" Pitched R3 1	1
Q1200R3	Turbine Base 12" Pitched R3 1	1
Q1400R3	Turbine Base 14" Pitched R3 1	1
Q1600R3	Turbine Base 16" Pitched R3 1	1
Q1800R3	Turbine Base 18" Pitched R3 1	1
Q2000R3	Turbine Base 20" Pitched R3 1	1
Q2400R3	Turbine Base 24" Pitched R3 1	1
Q3000R3	Turbine Base 30" Pitched R3 1	1
Q3600R3	Turbine Base 36" Pitched R3 1	1

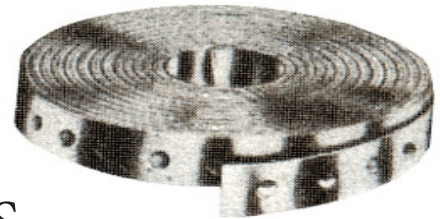
ROUND END CAPS



PART#	DESCRIPTION	PER PACK
REC04	4 inch dia.	1
REC05	5 inch dia.	1
REC06	6 inch dia.	1
REC07	7 inch dia.	1
REC08	8 inch dia.	1
REC09	9 inch dia.	1
REC10	10 inch dia.	1
REC12	12 inch dia.	1
REC14	14 inch dia.	1
REC16	16 inch dia.	1
REC18	18 inch dia.	1
REC20	20 inch dia.	1
REC24	24 inch dia.	1

HANGER IRON

A2830- 3/4" W. BY 100' Roll Perforated Hanger iron-10 per pack



SLIPS AND DRIVES



A7001

FLAT SLIPS- 60" long- 50 per box

A7002

DRIVE CLEATS- 60" long- 50 per box

A70015

STANDING SLIP - 10'

HEATER STANDS



PART#	DESCRIPTION	PER PACK
HS244	HEATER STAND 24"X4"	10
HS246	HEATER STAND 24"X6"	8
HS248	HEATER STAND 24"X8"	8
HS286	HEATER STAND 28"X6"	8
HS304	HEATER STAND 30"X4"	10
HS306	HEATER STAND 30"X6"	8
HS308	HEATER STAND 30"X8"	8
HS3010	HEATER STAND 30"X10"	8
HS364	HEATER STAND 36"X4"	10
HS366	HEATER STAND 36"X6"	8
HS368	HEATER STAND 36"X8"	8

PHONE: (504) 835-7247 • FAX: (504) 835-6586

WWW.JOVAL.COM

WALL THIMBLES



PART#	DESCRIPTION	PACK
WT300	3" dia.	1
WT400	4" dia.	1
WT500	5" dia.	1
WT600	6" dia.	1
WT700	7" dia.	1
WT800	8" dia.	1

VENT COLLARS



PART#	DESCRIPTION	PACK
VC300	3" dia.	1
VC400	4" dia.	1
VC500	5" dia.	1
VC600	6" dia.	1
VC700	7" dia.	1
VC800	8" dia.	1

VENT CAPS



PART#	DESCRIPTION	PACK
W0300	3" dia.	24
W0400	4" dia.	20
W0500	5" dia.	16
W0600	6" dia.	12
W0700	7" dia.	8
W0800	8" dia.	6
W1000	10" dia.	1
W1200	12" dia.	1



PART#	DESCRIPTION	PACK
R0300	3" dia.	1
R0400	4" dia.	1
R0500	5" dia.	1
R0600	6" dia.	1
R0700	7" dia.	1

REGISTER FITTINGS

WE CAN ALSO PRODUCE ADDITIONAL SIZES TO THOSE LISTED HERE. PLEASE CALL US FOR PRICING AND AVAILABILITY.

2100 SERIES- SHALLOW PROFILE UNINSULATED REGISTER FITTINGS

PART#	DESCRIPTION	PER PACK
A2101	10" x 6" - 6"	18
A2102	12" x 6" - 7"	20
A2103	14" x 6" - 8"	16
A2104	10" x 8" - 8"	10
A2105	12" x 6" - 6"	12
A2106	14" x 6" - 7"	16
A2107	8" x 4" - 5"	12



2300 SERIES- DEEP PROFILE UNINSULATED REGISTER FITTINGS

PART#	DESCRIPTION	PER PACK
A2301	10" x 6" - 5"	20
A2302	10" x 6" - 6"	18
A2304	10" x 6" - 7"	10
A2305	12" x 6" - 6"	18
A2306	12" x 6" - 7"	12
A2307	12" x 6" - 8"	10
A2308	14" x 6" - 7"	10
A2309	14" x 6" - 8"	10



Manufacturing
Delivering
GROWING
to meet your needs.

Introducing



MODEL E/R Residential B Vent 3"-8"

Your Complete Residential Venting Solution

- Efficient, economical, and easily installed
- Crafted for use with all listed gas appliances having draft hoods, or other applications listed to be used with Type B Gas Vent
- Approved for such residential applications as boilers, furnaces, water heaters, and space or wall heater venting
- Single or multi-appliance hook-ups
- UL/ULC approved
Outside casing of galvalume steel
- Inside conduit of aluminum



MODEL E/V Commercial B Vent 10"-30"

Your Complete Commercial Venting Solution

- Prefabricated, used for venting approved gas burning equipment with flue gas temperatures at the draft hood not exceeding 470°F (245°C)
- Prestamped holes formed in the male and female couplers making it easy to align lengths and insert screws provided with each component
- Large stocking inventory of sizes up to 30" diameter, giving you quick access to whatever your requirement
- A 1" air wall between the inner conduit of aluminum and the outer casing of galvalume offers high resistance to potential corrosion
- All components meet the highest standards recommended by UL and ULC.

JOVAL has 3" - 18" in stock for same day pick up or ship out.



Find us on Facebook!
Joval Manufacturing
Company, Inc.

120 Iris Ave • Jefferson, Louisiana 70121
(504) 835-7247 • (504) 835-6586
www.joval.com

BUY QUALITY.

BUY EXPERIENCE.

BUY JOVAL.

Joval
**MANUFACTURING
COMPANY, INC.**

PROUDLY PRODUCING
THE HIGHEST QUALITY
FITTINGS IN THE HVAC
AND ROOFING INDUSTRIES
FOR OVER 60 YEARS.

PHONE: (504) 835-7247 • FAX: (504) 835-6586
WWW.JOVAL.COM