



Joval

**MANUFACTURING
COMPANY, INC.**

Product Catalog - Volume 11

120 Iris Ave. / Jefferson, LA 70121 / Phone - (504)835-7247 / Fax - (504)835-6586

www.JOVAL.com

JOVAL

**MANUFACTURING
COMPANY, INC.**

www.JOVAL.com

Phone - (504) 835-7247

Fax - (504) 835-6586

SALES EMAIL

Sales@JOVAL.com

PLANT LOCATION

120 Iris Ave.
Jefferson, LA 70121

MAILING ADDRESS

P.O. Box 10113
Jefferson, LA 70181

OFFICE HOURS

Monday-Friday

8:00 AM - 4:30 PM

(Excluding all Major Holidays)

WILL CALL HOURS

Monday-Friday

9:00-11:00 AM and 2:00-4:00 PM

(Excluding all Major Holidays)



Since 1955 Joval has enjoyed serving a very loyal customer base that values quality, consistency, and personal service. Joval was founded by partners John Valenza and Walter Johnson, who combined their last names to come up with the company name.

John Valenza had been working with Walter Johnson in 20th Century Sheet Metal, a company that they started by kicking John's father's mule out of the barn. As that company grew in the commercial HVAC market, John's brothers joined the company. Eventually, John and Walter left that company to start Joval, which would introduce pre-fab metal duct and fittings to the growing residential market in Louisiana and Mississippi. They built the plant in Jefferson Parish, near the Orleans Parish line on Iris Ave. The plant remains in that location today, although it has had many expansions over the years.

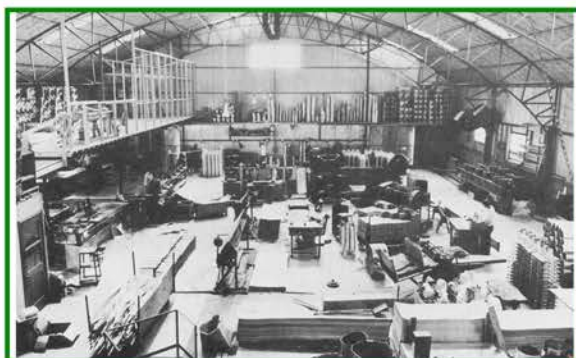
John Valenza served as president of Joval and Walter Johnson was Vice President. Veterans to the industry might remember Emile Oustalet, the original salesman for Joval, who was responsible for the company's early growth. He was followed by Larry Guillot, who remained with the company for years.

John, who eventually bought out his partner, also brought his two sons-in-law on board in the late 1960's. Donald Bourgeois began in the shipping department and worked in many areas of the business eventually becoming Vice President of Sales. He retired in 2006. Francis "Sonny" Hays, Jr. began in the maintenance shop, became the machinist and actually built several of the machines still used in production today. Sonny progressed to Vice President of Production before retiring in 2013. John Valenza, Jr. joined the company in the mid 1970's and fulfilled various roles in management. He eventually succeeded his father as President of Joval and remains in that position today.

Third generation family members John Valenza III and his brother Jason are also staff members. John III is Vice President of Sales and Jason is Vice President of Administration.

Most recently, Joval hired an Director of Operations, Austen Lepper, who has lead the production team to an all-time high in both productivity and order fulfillment. The experience of our management team contributes greatly to the quality for which Joval products are renown.

Under the current ownership of John, Jr., Joval remains a Louisiana based, family owned, homegrown company. Joval is currently focused on expanding into new product lines and improving aspects of existing products. The motto for Joval is "Manufacturing, Delivering, Growing". This reminds us of our commitment to manufacturing top quality products, delivering excellent customer service, and growing to meet our customers' needs.



**A0100 SERIES
STANDARD SNAPLOCK PIPE**

PART#	DESCRIPTION	PER BUNDLE
A0104	4" x 5' - 30 ga	25 ft
A0105	5" x 5' - 30 ga	50 ft
A0106	6" x 5' - 30 ga	50 ft
A0107	7" x 5' - 30 ga	50 ft
A0108	8" x 5' - 30 ga	50 ft
A0109	9" x 5' - 30 ga	50 ft
A0110	10" x 5' - 30 ga	50 ft
A0112	12" x 5' - 30 ga	50 ft
A0114306000	14" X5' - 30 ga	50 ft
A0114	14" x 3' - 26 ga	30 ft
A0116	16" x 3' - 26 ga	30 ft
A0118	18" x 3' - 26 ga	30 ft
A0120	20" x 3' - 26 ga	30 ft
A0124	24" x 3' - 26 ga	30 ft



**A0100266000 SERIES
26 GAUGE SNAPLOCK PIPE**

PART#	DESCRIPTION	PER BUNDLE
A0104266000	4" x 5'	25 ft
A0105266000	5" x 5'	50 ft
A0106266000	6" x 5'	50 ft
A0107266000	7" x 5'	50 ft
A0108266000	8" x 5'	50 ft
A0109266000	9" x 5'	50 ft
A0110266000	10" x 5'	50 ft
A0112266000	12" x 5'	50 ft
A0114266000	14" x 5'	25 ft



**C3000 and C4000 SERIES
CONDUCTOR PIPE**

PART #	DESCRIPTION
C3611	Conductor Pipe 3" Diam. 26 Gauge 10' Length
C4611-72	Conductor Pipe 4" Diam. 26 Gauge 6' Length
C4311-72	Conductor Pipe 4" Diam. 30 Gauge 6' Length
C4811	Conductor Pipe 4" Diam. 26 Gauge 10' Length
C4611	Conductor Pipe 4" Diam. 28 Gauge 10' Length
C4311	Conductor Pipe 4" Diam. 30 Gauge 10' Length

AVAILABLE IN PLAIN ROUND ONLY

Conductor Pipe is not sold in bundle quantities. Pieces can be purchased individually. Please call our sales team for bulk pricing of over 120 pieces.



**SB200 SERIES
STAND OFF BRACKETS**

STAND OFF BRACKETS ARE USED FOR SINGLE & DOUBLE WALL PIPE

3"-6" ADJUSTABLE

PART# SB200 100 PER PACK

A0200 SERIES

90 DEGREE ADJUSTABLE

PART#	DESCRIPTION	PER BUNDLE
A0203	3 inch dia.	20
A0204	4 inch dia.	16
A0205	5 inch dia.	12
A0206	6 inch dia.	12
A0207	7 inch dia.	12
A0208	8 inch dia.	12
A0209	9 inch dia.	12
A0210	10 inch dia.	12
A0212	12 inch dia.	4
A0214	14 inch dia.	4
A0216	16 inch dia.	4
A0218	18 inch dia.	1
A0220	20 inch dia.	1
A0222	22 inch dia.	1
A0224	24 inch dia.	1



A0200260000 SERIES
26 GAUGE
90 DEGREE
ADJUSTABLE

PART#	DESCRIPTION	PER BUNDLE
A0203260000	3 inch dia.	20
A0204260000	4 inch dia.	16
A0205260000	5 inch dia.	12
A0206260000	6 inch dia.	12
A0207260000	7 inch dia.	12
A0208260000	8 inch dia.	12
A0209260000	9 inch dia.	12
A0210260000	10 inch dia.	12
A0212260000	12 inch dia.	4
A0214260000	14 inch dia.	4



A0250 SERIES
90 DEGREE
SOLID

PART#	DESCRIPTION	PER BUNDLE
A0253	3 inch dia.	12
A0254	4 inch dia.	12
A0255	5 inch dia.	12
A0256	6 inch dia.	12



A0350 SERIES
45 DEGREE
SOLID

PART#	DESCRIPTION	PER BUNDLE
A0353	3 inch dia.	24
A0354	4 inch dia.	24
A0355	5 inch dia.	24
A0356	6 inch dia.	24

**A0400 SERIES
STANDARD DIFFUSER**

PART#	DESCRIPTION	PER PACK
A0401	5"X6"	8
A0402	6"X8"	12
A0403	6"X10"	12
A0404	7"X10"	12
A0405	8"X10"	12
A0406	8"X12"	10
A0407	9"X14"	6
A0408	6"X6"	20
A0409	7"X8"	12
A0410	8"X8"	8
A0411	9"X12"	10
A0412	9"X14"	5



**A0450 SERIES
ROUND DIFFUSERS WITH DAMPER**

PART#	DESCRIPTION	PER PACK
A0451	5"X6"	12
A0452	6"X8"	10
A0453	6"X10"	10
A0454	7"X10"	10
A0455	8"X10"	10
A0456	8"X12"	10
A0457	9"X14"	5
A0458	6"X6"	20
A0459	7"X8"	10
A0460	8"X8"	8
A0461	9"X12"	10
A0462	10"X14"	5



**A0500 SERIES
SQUARE DIFFUSERS**

PART#	DESCRIPTION	PER PACK
A0501	6"X6"- 5"	20
A0502	7"X7"- 6"	12
A0503	9"X9"- 7"	8
A0504	12"X12"- 8"	15
A0505	6"X6"- 6"	16
A0506	8"X8"- 6"	24
A0507	8"X8"- 7"	24
A0508	8"X8"- 8"	24
A0509	10"X10"- 7"	18
A0510	10"X10"- 8"	18
A0511	12"X12"- 10"	5
A0512	14"X14"- 10"	1
A0513	9"X9"- 8"	18
A0514	10"X10"- 9"	18
A0515	12"X12"- 9"	12



**A8100 SERIES UNINSULATED
SQUARE TO ROUND FITTINGS**

PART #	DESCRIPTION	PER PACK
A8110100805	10" X 10" - 8" COLLAR	24
A8112121005	12" X 12" - 10" COLLAR	16
A8114141205	14" X 14" - 12" COLLAR	10



WALL STACK



STYLE A - 90 DEGREE

A0800 SERIES - WALL STACKS

PART#	DESCRIPTION	PER PACK
A0801	08"X3 1/4" X12"	1
A0802	10"X3 1/4"X12"	1
A0803	12"X3 1/4"X12"	1
A0804	14"X3 1/4"X12"	1
A0811	08"X3 1/4"X24"	1
A0812	10"X3 1/4"X24"	1
A0813	12"X3 1/4"X24"	1
A0814	14"X3 1/4"X24"	1
A0821	08"X3 1/4"X60"	1
A0822	10"X3 1/4"X60"	1
A0823	12"X3 1/4"X60"	1
A0824	14"X3 1/4 "X60"	1
A0831	8"X3 1/4" X 36"	1
A0832	10"X3 1/4" X 36"	1
A0833	12"X 3 1/4" X 36"	1
A0834	14"X 3 1/4" X 36"	1
A0844	14"X 3 1/4" X 48"	1
A084A	ELBOW - 45 DEG. STYLE A	1
A084B	ELBOW - 45 DEG. STYLE B	1
A089A	ELBOW - 90 DEG. STYLE A	1
A089B	ELBOW - 90 DEG. STYLE B	1
A0802EC	END CAP- 10"X 3 1/4"	1
A0804EC	END CAP-14"X 3 1/4"	1



STYLE B - 90 DEGREE

STYLE A - 45 DEGREE



STYLE B - 45 DEGREE

Please specify stack size then ordering all Style A and Style B Elbows

A3000 SERIES - STACK BOOTS (with offset)

PART#	DESCRIPTION	PER PACK
A3002	10"X3 1/4"X06"	24
A3007	10"X3 1/4"X07"	24
A3008	10"X3 1/4"X08"	20



A3100 SERIES - STACK BOOTS (with center taper)

PART#	DESCRIPTION	PER PACK
A3101	8" X 3 1/4" X05"	1
A3102	10"X3 1/4"X06"	12
A3103	12"X3 1/4"X06"	1
A3104	12"X3 1/4"X07"	1
A3105	12"X3 1/4"X08"	1
A3106	14"X3 1/4"X08"	1
A3107	10"X3 1/4"X07"	24



**A0900 SERIES
UNINSULATED WYE**



**Additional sizes and crimps are available.
Please call for information.**

PART#	DESCRIPTION	PER PACK
A0901	07"X05"X05"	5
A0902	08"X06"X06"	12
A0903	09"X07"X07"	9
A0904	10"X08"X08"	6
A0905	12"X08"X08"	6
A0906	12"X10"X08"	4
A0907	14"X12"X08"	1
A0908	16"X14"X08"	1
A0909	08"X08"X06"	9
A0910	08"X07"X07"	8
A0911	10"X07"X07"	8
A0912	10"X08"X07"	6
A0913	10"X08"X06"	8
A0914	10"X09"X07"	6
A0915	08"X08"X08"	6
A0916	08"X07"X06"	10
A0917	09"X08"X06"	10
A0918	09"X08"X07"	10
A0919	12"X10"X07"	4
A0900120909	12"X09"X09"	1
A0900121010	12"X10"X10"	1

A0950 SERIES - UNINSULATED TEE

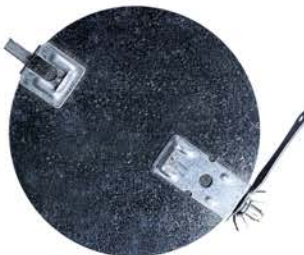
PART#	DESCRIPTION	PER PACK
A0951	08"X08"X08"	8
A0952	10"X10"X08"	4
A0953	12"X12"X08"	4
A0954	12"X12"X12"	1
A0955	14"X14"X14"	1
A0956	16"X16"X16"	1
A0957	06"X06"X06"	1
A0958	03"X03"X03"	1
A0959	04"X04"X04"	1
A0960	05"X05"X05"	1



**Additional sizes and crimps are available.
Please call for information.**

**D1300 SERIES
DAMPERS**

PART#	DESCRIPTION	PER PACK
D1304	4 inch dia.	1
D1305	5 inch dia.	1
D1306	6 inch dia.	1
D1307	7 inch dia.	1
D1308	8 inch dia.	1
D1309	9 inch dia.	1
D1310	10 inch dia.	1
D1312	12 inch dia.	1
D1314	14 inch dia.	1
D1316	16 inch dia.	1
D1318	18 inch dia.	1
D1320	20 inch dia.	1



**D13500 SERIES
INLINE
DAMPERS**



PART#	DESCRIPTION	PER PACK
D13504	4 inch dia. Inline	1
D13505	5 inch dia. Inline	1
D13506	6 inch dia. Inline	1
D13507	7 inch dia. Inline	1
D13508	8 inch dia. Inline	1
D13510	10 inch dia. Inline	1
D13512	12 inch dia. Inline	1



DAMPER HARDWARE (L to R)

PART#	DESCRIPTION	PER PACK
DDWN	WING NUT	100
DDRH	RAPIT HANDLE	100
DDTSB	THREADED SPRING BEARING	100
DDCLIP	CLIP	100
DDGRE	SLIDE RAPIT EXTENSION	100



A1400 SERIES
Non-Dampered



A1450 SERIES
Dampered

PART#	DESCRIPTION	PER PACK
A1401	5 inch dia.	24
A1402	6 inch dia.	30
A1403	7 inch dia.	25
A1404	8 inch dia.	20
A1405	9 inch dia.	14
A1406	10 inch dia.	12
A1407	12 inch dia.	7
A1408	14 inch dia.	6
A1409	16 inch dia.	1
A1410	18 inch dia.	1
A1411	20 inch dia.	1
A1412	4 inch dia.	30

PART#	DESCRIPTION	PER PACK
A1451	5 inch dia.	24
A1452	6 inch dia.	30
A1453	7 inch dia.	25
A1454	8 inch dia.	20
A1455	9 inch dia.	14
A1456	10 inch dia.	12
A1457	12 inch dia.	5
A1458	14 inch dia.	3
A1459	16 inch dia.	3
A1460	18 inch dia.	1
A1461	20 inch dia.	1
A1462	4 inch dia.	30

A3600 SERIES
R6 Insulation - Non-Dampered



PART#	DESCRIPTION	PER PACK
A3604	Start Collar (D.B) 4" R6	15
A3605	Start Collar (D.B) 5" R6	30
A3606	Start Collar (D.B) 6" R6	18
A3607	Start Collar (D.B) 7" R6	32
A3608	Start Collar (D.B) 8" R6	24
A3609	Start Collar (D.B) 9" R6	18
A3610	Start Collar (D.B) 10" R6	14
A3612	Start Collar (D.B) 12" R6	12
A3614	Start Collar (D.B) 14" R6	5
A3616	Start Collar (D.B) 16" R6	4
A3618	Start Collar (D.B) 18" R6	8
A3620	Start Collar (D.B) 20" R6	7

D3600 SERIES
R6 Insulation - Dampered



PART#	DESCRIPTION	PER PACK
D3604	Start Collar (D.B) 4" w/Damp R6	15
D3605	Start Collar (D.B) 5" w/Damp R6	30
D3606	Start Collar (D.B) 6" w/Damp R6	18
D3607	Start Collar (D.B) 7" w/Damp R6	32
D3608	Start Collar (D.B) 8" w/Damp R6	24
D3609	Start Collar (D.B) 9" w/Damp R6	18
D3610	Start Collar (D.B) 10" w/Damp R6	14
D3612	Start Collar (D.B) 12" w/Damp R6	12
D3614	Start Collar (D.B) 14" w/Damp R6	3
D3616	Start Collar (D.B) 16" w/Damp R6	3
D3618	Start Collar (D.B) 18" w/Damp R6	8
D3620	Start Collar (D.B) 20" w/Damp R6	1



A1200 SERIES
Flex duct connector collar

PART#	DESCRIPTION	PER PACK
A1204	Flex connector collar 4"	1
A1205	Flex connector collar 5"	1
A1206	Flex connector collar 6"	25
A1207	Flex connector collar 7"	18
A1208	Flex connector collar 8"	12
A1209	Flex connector collar 9"	1
A1210	Flex connector collar 10"	1
A1212	Flex connector collar 12"	1



A1500 SERIES
Non-Dampered

PART#	DESCRIPTION	PER PACK
A1501	5 inch dia.	30
A1502	6 inch dia.	24
A1503	7 inch dia.	18
A1504	8 inch dia.	12
A1505	9 inch dia.	12
A1506	10 inch dia.	8
A1507	12 inch dia.	5
A1508	14 inch dia.	3
A1509	16 inch dia.	3
A1510	18 inch dia.	1
A1511	20 inch dia.	1
A1512	4 inch dia.	1



D1500 SERIES
Dampered

PART#	DESCRIPTION	PER PACK
D1501	5 inch dia.	30
D1502	6 inch dia.	24
D1503	7 inch dia.	18
D1504	8 inch dia.	12
D1505	9 inch dia.	12
D1506	10 inch dia.	8
D1507	12 inch dia.	5
D1508	14 inch dia.	3
D1509	16 inch dia.	3
D1510	18 inch dia.	1
D1511	20 inch dia.	1
D1512	4 inch dia.	1



S1500 SERIES
Non-Dampered w/ Scoop

PART#	DESCRIPTION	PER PACK
S1501	5 inch dia.	30
S1502	6 inch dia.	24
S1503	7 inch dia.	18
S1504	8 inch dia.	12
S1505	9 inch dia.	12
S1506	10 inch dia.	8
S1507	12 inch dia.	5
S1508	14 inch dia.	3
S1509	16 inch dia.	3
S1510	18 inch dia.	1
S1511	20 inch dia.	1
S1512	4 inch dia.	1



A1550 SERIES
Dampered w/ Scoop

PART#	DESCRIPTION	PER PACK
A1551	5 inch dia.	30
A1552	6 inch dia.	24
A1553	7 inch dia.	18
A1554	8 inch dia.	12
A1555	9 inch dia.	12
A1556	10 inch dia.	8
A1557	12 inch dia.	5
A1558	14 inch dia.	3
A1559	16 inch dia.	3
A1560	18 inch dia.	1
A1561	20 inch dia.	1
A1562	4 inch dia.	1



A3200 SERIES
Flat - Non-Dampered

D3300 SERIES
Flat - Dampered

PART#	DESCRIPTION	PER PACK
A3204	4" Titeseal- flat	18
A3205	5" Titeseal- flat	18
A3206	6" Titeseal- flat	36
A3207	7" Titeseal- flat	24
A3208	8" Titeseal- flat	18
A3209	9" Titeseal- flat	14
A3210	10" Titeseal- flat	12
A3212	12" Titeseal- flat	9
A3214	14" Titeseal- flat	6
A3216	16" Titeseal- flat	6
A3218	18" Titeseal- flat	8
A3220	20" Titeseal- flat	7

PART#	DESCRIPTION	PER PACK
D3304	4" Titeseal- flat	18
D3305	5" Titeseal- flat	18
D3306	6" Titeseal- flat	36
D3307	7" Titeseal- flat	24
D3308	8" Titeseal- flat	18
D3309	9" Titeseal- flat	14
D3310	10" Titeseal- flat	12
D3312	12" Titeseal- flat	9
D3314	14" Titeseal- flat	6
D3316	16" Titeseal- flat	6
D3318	18" Titeseal- flat	7
D3320	20" Titeseal- flat	7



D3300S SERIES
Flat w/ Standoff Damper

PART#	DESCRIPTION	PER PACK
D3304S	4" Titeseal- flat	18
D3305S	5" Titeseal- flat	18
D3306S	6" Titeseal- flat	36
D3307S	7" Titeseal- flat	24
D3308S	8" Titeseal- flat	18
D3309S	9" Titeseal- flat	14
D3310S	10" Titeseal- flat	12
D3312S	12" Titeseal- flat	9
D3314S	14" Titeseal- flat	6
D3316S	16" Titeseal- flat	6
D3318S	18" Titeseal- flat	7
D3320S	20" Titeseal- flat	7



A3400 SERIES
Saddle - Non-Dampered



D3500 SERIES
Saddle - Dampered

PART#	DESCRIPTION	PER PACK
A3404	4" Titeseal- saddle	18
A3405	5" Titeseal- saddle	18
A3406	6" Titeseal- saddle	36
A3407	7" Titeseal- saddle	24
A3408	8" Titeseal- saddle	18
A3409	9" Titeseal- saddle	14
A3410	10" Titeseal- saddle	12
A3412	12" Titeseal- saddle	6

PART#	DESCRIPTION	PER PACK
D3504	4" Titeseal- saddle	18
D3505	5" Titeseal- saddle	18
D3506	6" Titeseal- saddle	36
D3507	7" Titeseal- saddle	24
D3508	8" Titeseal- saddle	18
D3509	9" Titeseal- saddle	12
D3510	10" Titeseal- saddle	12
D3512	12" Titeseal- saddle	9



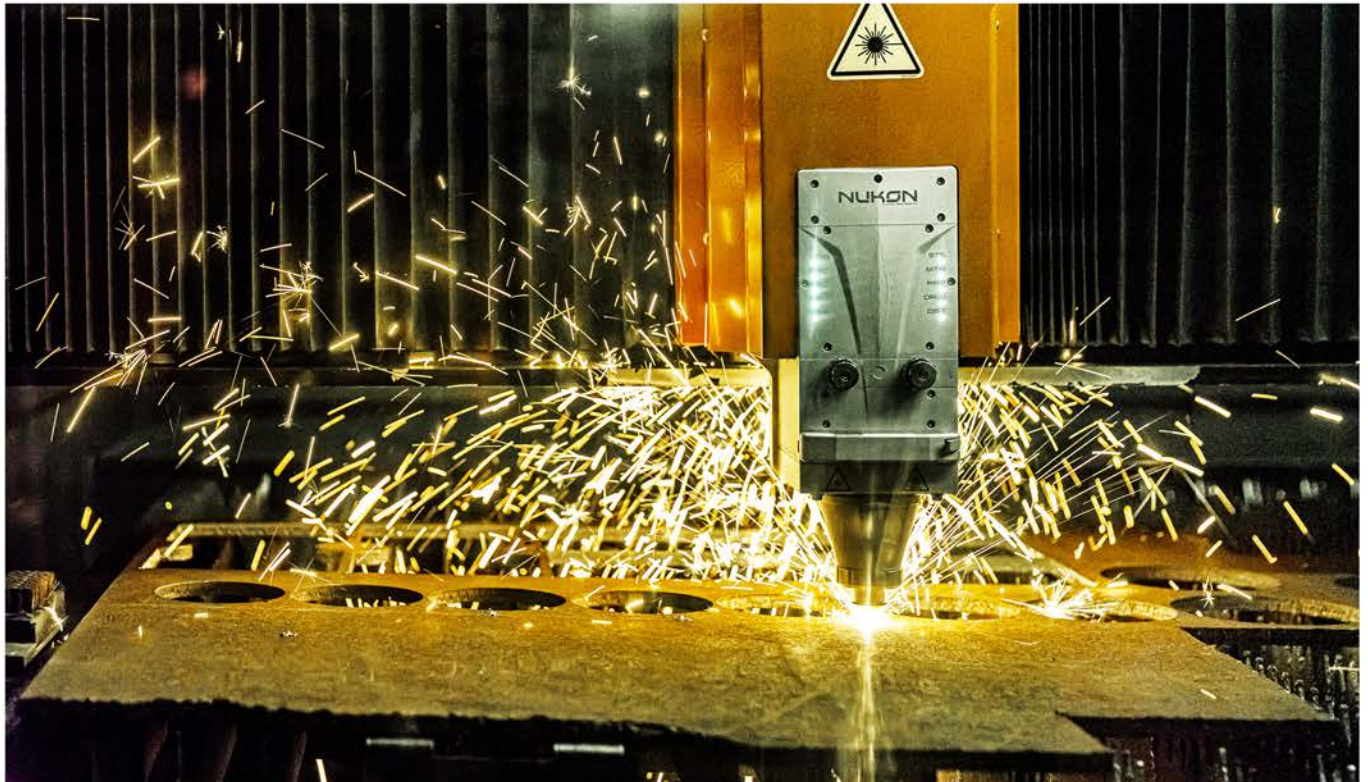
**A1100 SERIES
REDUCERS**

PART#	DESCRIPTION	PER PACK
A1101	06" X 05"	20
A1102	07" X 06"	20
A1103	08" X 06"	12
A1104	08" X 07"	12
A1105	09" X 07"	16
A1106	10" X 06"	12
A1107	10" X 07"	12
A1108	10" X 08"	12
A1109	12" X 08"	7
A1110	12" X 10"	7
A1112	14" X 12"	7
A1113	16" X 14"	7
A1114	04" X 03"	1
A1115	05" X 04"	1
A1116	09" X 08"	16
A1117	10" X 09"	12

**A1100I SERIES
INCREASERS**

PART#	DESCRIPTION	PER PACK
A1101I	06" X 05"	20
A1102I	07" X 06"	20
A1103I	08" X 06"	12
A1104I	08" X 07"	12
A1105I	09" X 07"	16
A1106I	10" X 06"	12
A1107I	10" X 07"	12
A1108I	10" X 08"	12
A1109I	12" X 08"	7
A1110I	12" X 10"	7
A1112I	14" X 12"	7
A1113I	16" X 14"	7
A1114I	04" X 03"	1
A1115I	05" X 04"	1
A1116I	09" X 08"	16
A1117I	10" X 09"	12

**Additional Reducer/Increaser sizes are available.
Please call our office for pricing and availability.**





WT000 SERIES WALL THIMBLES

PART#	DESCRIPTION	PACK
WT300	3" dia.	1
WT400	4" dia.	1
WT500	5" dia.	1
WT600	6" dia.	1
WT700	7" dia.	1
WT800	8" dia.	1

WT000 SERIES VENT COLLARS

PART#	DESCRIPTION	PACK
VC300	3" dia.	1
VC400	4" dia.	1
VC500	5" dia.	1
VC600	6" dia.	1
VC700	7" dia.	1
VC800	8" dia.	1



RECOO SERIES ROUND END CAPS



PART#	DESCRIPTION	PER PACK
REC04	4 inch dia.	1
REC05	5 inch dia.	1
REC06	6 inch dia.	1
REC07	7 inch dia.	1
REC08	8 inch dia.	1
REC09	9 inch dia.	1
REC10	10 inch dia.	1
REC12	12 inch dia.	1
REC14	14 inch dia.	1
REC16	16 inch dia.	1
REC18	18 inch dia.	1
REC20	20 inch dia.	1
REC24	24 inch dia.	1

Round end caps are available in crimped, uncrimped and low profile for whatever application you need. Please call our sales office for details and pricing

HS000 SERIES HEATER STANDS

PART#	DESCRIPTION	PER PACK
HS244	HEATER STAND 24"X4"	10
HS246	HEATER STAND 24"X6"	8
HS248	HEATER STAND 24"X8"	8
HS286	HEATER STAND 28"X6"	8
HS304	HEATER STAND 30"X4"	10
HS306	HEATER STAND 30"X6"	8
HS308	HEATER STAND 30"X8"	8
HS3010	HEATER STAND 30"X10"	8



Additional Heater Stand LENGTHS are available.
All Custom Lengths must be 4", 6", 8" or 10" in Height.
Please call for additional information and pricing.



**A1960 SERIES - R6 INSULATED WYES
NON-DAMPERED
(1 1/2 INCH INSULATION)**

PART#	DESCRIPTION	PER PACK
A1960121010	12"X10"X10" R6	4
A1961	7"X5"X5" R6	4
A1962	8"X6"X6" R6	4
A1963	9"X7"X7" R6	4
A1964	10"X8"X8" R6	4
A1965	12"X8"X8" R6	4
A1966	12"X10"X8" R6	4
A1967	14"X12"X8" R6	4



**D1960 SERIES - R6 INSULATED WYES
DAMPERED
(1 1/2 INCH INSULATION)**

PART#	DESCRIPTION	PER PACK
D1960121010	12"X10"X10" R6	4
D1961	7"X5"X5" R6	4
D1962	8"X6"X6" R6	4
D1963	9"X7"X7" R6	4
D1964	10"X8"X8" R6	4
D1965	12"X8"X8" R6	4
D1966	12"X10"X8" R6	4
D1967	14"X12"X8" R6	4

INSULATED PANELS & ENDS

Used for assembling custom Insulated Wyes & Mixing Boxes.

**A200006 SERIES
R6 INSULATED PANELS & ENDS
(14" x 14")**

PART#	DESCRIPTION	PER PACK
A200106	R6 Square End	16
A200206	R6 Triangular End	16
A200306	R6 Plain Panel	16
A200406	R6 4" Collar	7
A200506	R6 5" Collar	7
A200606	R6 6" Collar	7
A200706	R6 7" Collar	7
A200806	R6 8" Collar	7
A200906	R6 9" Collar	7
A201006	R6 10" Collar	7
A201206	R6 12" Collar	7



**16" x 16" & 18" x 18" Panels are available as Special Orders.
R-8 Insulation is also available as a Special Order.
Please contact our Sales Team for details and pricing.**

A2600 SERIES - TOP TAP INSULATED BOXES w/ FLANGE

(R6 - 1 1/2 INCH INSULATION)



PART#	DESCRIPTION	PER PACK	PART#	DESCRIPTION	PER PACK
A2600060604	06 x 06 - 04 R6	24	A2613	12 x 08 - 08 R6	16
A2600101006	10 x 10 - 06 R6	12	A2614	12 x 12 - 08 R6	12
A2600120809	12 x 08 - 09 R6	12	A2615	12 X 12-09 R6	12
A2600121207	12 x 12 - 07 R6	12	A2616	12 x 12 - 10 R6	12
A2601	06 x 06 - 05 R6	24	A2617	14 x 06 - 08 R6	12
A2602	08 x 04 - 05 R6	20	A2618	14 x 14 - 10 R6	6
A2603	08 x 08 - 06 R6	16	A2619	06 x 06 - 06 R6	24
A2604	08 x 08 - 07 R6	16	A2620	08 x 06 - 06 R6	14
A2605	08 x 08 - 08 R6	16	A2621	10 x 08 - 06 R6	12
A2606	10 x 06 - 05 R6	20	A2622	10 x 10 - 09 R6	12
A2607	10 x 06 - 06 R6	20	A2623	10 x 10 - 10 R6	12
A2608	10 x 06 - 07 R6	15	A2624	12 x 06 - 08 R6	15
A2609	10 x 10 - 07 R6	12	A2625	14 x 06 - 07 R6	12
A2610	10 x 10 - 08 R6	12	A2626	14 x 08 - 09 R6	10
A2611	12 x 06 - 06 R6	20	A2627	12 x 12 - 12 R6	12
A2612	12 x 06 - 07 R6	15	A2628	14 x 14 - 09 R6	6
			A2629	14 x 14 - 12 R6	6



A2600NF SERIES 6" TOP TAP INSULATED BOXES WITH NO FLANGE

(R6 - 1 1/2 INCH INSULATION)



A2600BF SERIES 6" TOP TAP INSULATED BOXES WITH BOTTOM FLANGE

(R6 - 1 1/2 INCH INSULATION)

PART#	DESCRIPTION	PER PACK
A2601NF	06" X 06" - 05" No Flange	24
A2602NF	08" X 04" - 05" No Flange	24
A2603NF	08" X 08" - 06" No Flange	16
A2604NF	08" X 08" - 07" No Flange	16
A2605NF	08" X 08" - 08" No Flange	16
A2606NF	10" X 06" - 05" No Flange	24
A2607NF	10" X 06" - 06" No Flange	24
A2608NF	10" X 06" - 07" No Flange	18
A2609NF	10" X 10" - 07" No Flange	12
A2610NF	10" X 10" - 08" No Flange	12
A2611NF	12" X 06" - 06" No Flange	24
A2612NF	12" X 06" - 07" No Flange	15
A2613NF	12" X 08" - 08" No Flange	16
A2614NF	12" X 12" - 08" No Flange	12
A2615NF	12" X 12" - 09" No Flange	12
A2616NF	12" X 12" - 10" No Flange	12
A2617NF	14" X 06" - 08" No Flange	12
A2618NF	14" X 14" - 10" No Flange	6
A2619NF	06" X 06" - 06" No Flange	24
A2620NF	08" X 06" - 06" No Flange	14
A2621NF	10" X 08" - 06" No Flange	12
A2622NF	10" X 10" - 09" No Flange	12
A2623NF	10" X 10" - 10" No Flange	12
A2624NF	12" X 06" - 08" No Flange	15
A2625NF	14" X 06" - 07" No Flange	12
A2626NF	14" X 08" - 09" No Flange	10
A2627NF	12" X 12" - 12" No Flange	12
A2628NF	14" X 14" - 09" No Flange	6
A2629NF	14" X 14" - 12" No Flange	6

PART#	DESCRIPTION	PER PACK
A2601BF	06" X 06" - 05" Btm Flange	24
A2602BF	08" X 04" - 05" Btm Flange	20
A2603BF	08" X 08" - 06" Btm Flange	16
A2604BF	08" X 08" - 07" Btm Flange	16
A2605BF	08" X 08" - 08" Btm Flange	16
A2606BF	10" X 06" - 05" Btm Flange	20
A2607BF	10" X 06" - 06" Btm Flange	20
A2608BF	10" X 06" - 07" Btm Flange	15
A2609BF	10" X 10" - 07" Btm Flange	12
A2610BF	10" X 10" - 08" Btm Flange	12
A2611BF	12" X 06" - 06" Btm Flange	14
A2612BF	12" X 06" - 07" Btm Flange	14
A2613BF	12" X 08" - 08" Btm Flange	16
A2614BF	12" X 12" - 08" Btm Flange	12
A2615BF	12" X 12" - 09" Btm Flange	12
A2616BF	12" X 12" - 10" Btm Flange	12
A2617BF	14" X 06" - 08" Btm Flange	12
A2618BF	14" X 14" - 10" Btm Flange	6
A2619BF	06" X 06" - 06" Btm Flange	24
A2620BF	08" X 06" - 06" Btm Flange	14
A2621BF	10" X 08" - 06" Btm Flange	12
A2622BF	10" X 10" - 09" Btm Flange	12
A2623BF	10" X 10" - 10" Btm Flange	12
A2624BF	12" X 06" - 08" Btm Flange	14
A2625BF	14" X 06" - 07" Btm Flange	12
A2626BF	14" X 08" - 09" Btm Flange	10
A2627BF	12" X 12" - 12" Btm Flange	12
A2628BF	14" X 14" - 09" Btm Flange	6
A2629BF	14" X 14" - 12" Btm Flange	6

INSULATED BOXES

A4600 SERIES - 4" HIGH TOP TAP TOP FLANGE INSULATED BOXES (R6 - 1 1/2 INCH INSULATION)



PART#	DESCRIPTION	PER PACK	PART#	DESCRIPTION	PER PACK
A4601	06" X 06" - 05"	24	A4615	12" X 12" - 09"	12
A4602	08" X 04" - 05"	20	A4616	12" X 12" - 10"	12
A4603	08" X 08" - 06"	16	A4617	14" X 06" - 08"	12
A4604	08" X 08" - 07"	16	A4618	14" X 14" - 10"	6
A4605	08" X 08" - 08"	16	A4619	06" X 06" - 06"	24
A4606	10" X 06" - 05"	20	A4620	08" X 06" - 06"	14
A4607	10" X 06" - 06"	20	A4621	10" X 08" - 06"	12
A4608	10" X 06" - 07"	15	A4622	10" X 10" - 09"	12
A4609	10" X 10" - 07"	12	A4623	10" X 10" - 10"	12
A4610	10" X 10" - 08"	12	A4624	12" X 06" - 08"	15
A4611	12" X 06" - 06"	20	A4625	14" X 06" - 07"	12
A4612	12" X 06" - 07"	15	A4626	14" X 08" - 09"	12
A4613	12" X 08" - 08"	12	A4627	12" X 12" - 12"	10
A4614	12" X 12" - 08"	12	A4628	14" X 14" - 09"	6
			A4629	14" X 14" - 12"	6



**A4600NF SERIES
4" TOP TAP INSULATED BOXES
WITH NO FLANGE
(R6 - 1 1/2 INCH INSULATION)**

PART#	DESCRIPTION	PER PACK
A4601NF	06" X 06" - 05" No Flange	24
A4602NF	08" X 04" - 05" No Flange	32
A4603NF	08" X 08" - 06" No Flange	24
A4604NF	08" X 08" - 07" No Flange	24
A4605NF	08" X 08" - 08" No Flange	24
A4606NF	10" X 06" - 05" No Flange	30
A4607NF	10" X 06" - 06" No Flange	30
A4608NF	10" X 06" - 07" No Flange	24
A4609NF	10" X 10" - 07" No Flange	14
A4610NF	10" X 10" - 08" No Flange	14
A4611NF	12" X 06" - 06" No Flange	25
A4612NF	12" X 06" - 07" No Flange	20
A4613NF	12" X 08" - 08" No Flange	16
A4614NF	12" X 12" - 08" No Flange	14
A4615NF	12" X 12" - 09" No Flange	14
A4616NF	12" X 12" - 10" No Flange	14
A4617NF	14" X 06" - 08" No Flange	16
A4618NF	14" X 14" - 10" No Flange	8
A4619NF	06" X 06" - 06" No Flange	24
A4620NF	08" X 06" - 06" No Flange	14
A4621NF	10" X 08" - 06" No Flange	14
A4622NF	10" X 10" - 09" No Flange	14
A4623NF	10" X 10" - 10" No Flange	14
A4624NF	12" X 06" - 08" No Flange	20
A4625NF	14" X 06" - 07" No Flange	16
A4626NF	14" X 08" - 09" No Flange	10
A4627NF	12" X 12" - 12" No Flange	14
A4628NF	14" X 14" - 09" No Flange	8
A4629NF	14" X 14" - 12" No Flange	8



**A4600BF SERIES
4" TOP TAP INSULATED BOXES
WITH BOTTOM FLANGE
(R6 - 1 1/2 INCH INSULATION)**

PART#	DESCRIPTION	PER PACK
A4601BF	06" X 06" - 05" Btm Flange	24
A4602BF	08" X 04" - 05" Btm Flange	25
A4603BF	08" X 08" - 06" Btm Flange	20
A4604BF	08" X 08" - 07" Btm Flange	20
A4605BF	08" X 08" - 08" Btm Flange	20
A4606BF	10" X 06" - 05" Btm Flange	25
A4607BF	10" X 06" - 06" Btm Flange	25
A4608BF	10" X 06" - 07" Btm Flange	20
A4609BF	10" X 10" - 07" Btm Flange	14
A4610BF	10" X 10" - 08" Btm Flange	14
A4611BF	12" X 06" - 06" Btm Flange	21
A4612BF	12" X 06" - 07" Btm Flange	18
A4613BF	12" X 08" - 08" Btm Flange	16
A4614BF	12" X 12" - 08" Btm Flange	12
A4615BF	12" X 12" - 09" Btm Flange	12
A4616BF	12" X 12" - 10" Btm Flange	12
A4617BF	14" X 06" - 08" Btm Flange	16
A4618BF	14" X 14" - 10" Btm Flange	8
A4619BF	06" X 06" - 06" Btm Flange	24
A4620BF	08" X 06" - 06" Btm Flange	14
A4621BF	10" X 08" - 06" Btm Flange	14
A4622BF	10" X 10" - 09" Btm Flange	14
A4623BF	10" X 10" - 10" Btm Flange	14
A4624BF	12" X 06" - 08" Btm Flange	20
A4625BF	14" X 06" - 07" Btm Flange	16
A4626BF	14" X 08" - 09" Btm Flange	10
A4627BF	12" X 12" - 12" Btm Flange	14
A4628BF	14" X 14" - 09" Btm Flange	8
A4629BF	14" X 14" - 12" Btm Flange	8

SLANT TOP BOXES

All Slant Top Boxes are at a FIXED 30 Degree Angle.

A5200 SERIES

(R6 - 1 1/2 INCH INSULATION)

PART#	DESCRIPTION	PER PACK
A5202	08" X 4" - 5"	20
A5207	10" X 6" - 6"	20
A5211	12" X 6" - 6"	16
A5212	12" X 6" - 7"	15
A5217	14" X 6" - 8"	10
A5224	12" X 6" - 8"	16



NO TAP - INSULATED BOXES.

A5600000000 SERIES

(R6 - 1 1/2 INCH INSULATION)

PART#	DESCRIPTION	PER PACK
A5600060600	06x06-00 R6	18
A5600080400	08x04-00 R6	20
A5600080800	08x08-00 R6	15
A5600100600	10x06-00 R6	12
A5600101000	10x10-00 R6	12
A5600120600	12x06-00 R6	12
A5600120800	12x08-00 R6	12
A5600121200	12x12-00 R6	8
A5600140600	14x06-00 R6	12
A5600140800	14x08-00 R6	9
A5600141400	14x14-00 R6	6



A5600 SERIES

SIDE TAP INSULATED BOXES

(R6 - 1 1/2 INCH INSULATION)

PART#	DESCRIPTION	PER PACK
A5601	06x06-05 R6	12
A5602	08x04-05 R6	15
A5603	08x08-06 R6	15
A5604	08x08-07 R6	15
A5605	08x08-08 R6	15
A5607	10x06-06 R6	12
A5608	10x06-07 R6	12
A5609	10x10-07 R6	12
A5610	10x10-08 R6	12
A5611	12x06-06 R6	12
A5612	12x06-07 R6	12
A5614	12x12-08 R6	8
A5615	12x12-09 R6	6
A5617	14x06-08 R6	12
A5618	14x14-10 R6	6
A5619	06x06-06 R6	12
A5624	12x06-08 R6	12



END TAP - INSULATED BOXES

A6600 SERIES

(R6 - 1 1/2 INCH INSULATION)

PART#	DESCRIPTION	PER PACK
A6602	08" X 04" - 05"	15
A6607	10" X 06" - 06"	12
A6611	12" X 06" - 06"	12
A6612	12" X 06" - 07"	12
A6617	14" X 06" - 08"	13
A6624	12" X 06" - 08"	12



A4800NF SERIES
4" TOP TAP INSULATED BOXES
WITH NO FLANGE
 (R8 - 2 INCH INSULATION)



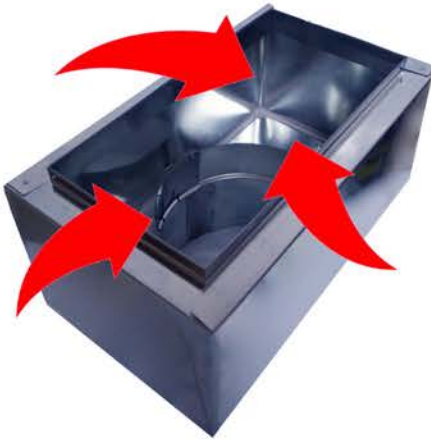
A4800BF SERIES
4" TOP TAP INSULATED BOXES
WITH BOTTOM FLANGE
 (R8 - 2 INCH INSULATION)

PART#	DESCRIPTION	PER PACK
A4801NF	06" X 06" - 05" No Flange	24
A4802NF	08" X 04" - 05" No Flange	32
A4803NF	08" X 08" - 06" No Flange	24
A4804NF	08" X 08" - 07" No Flange	24
A4805NF	08" X 08" - 08" No Flange	24
A4806NF	10" X 06" - 05" No Flange	25
A4807NF	10" X 06" - 06" No Flange	30
A4808NF	10" X 06" - 07" No Flange	24
A4809NF	10" X 10" - 07" No Flange	14
A4810NF	10" X 10" - 08" No Flange	14
A4811NF	12" X 06" - 06" No Flange	25
A4812NF	12" X 06" - 07" No Flange	20
A4813NF	12" X 08" - 08" No Flange	16
A4814NF	12" X 12" - 08" No Flange	14
A4815NF	12" X 12" - 09" No Flange	14
A4816NF	12" X 12" - 10" No Flange	14
A4817NF	14" X 06" - 08" No Flange	16
A4818NF	14" X 14" - 10" No Flange	8
A4819NF	06" X 06" - 06" No Flange	24
A4820NF	08" X 06" - 06" No Flange	14
A4821NF	10" X 08" - 06" No Flange	14
A4822NF	10" X 10" - 09" No Flange	14
A4823NF	10" X 10" - 10" No Flange	14
A4824NF	12" X 06" - 08" No Flange	20
A4825NF	14" X 06" - 07" No Flange	16
A4826NF	14" X 08" - 09" No Flange	10
A4827NF	12" X 12" - 12" No Flange	14
A4828NF	14" X 14" - 09" No Flange	8
A4829NF	14" X 14" - 12" No Flange	8

PART#	DESCRIPTION	PER PACK
A4801BF	06" X 06" - 05" Btm Flange	24
A4802BF	08" X 04" - 05" Btm Flange	25
A4803BF	08" X 08" - 06" Btm Flange	20
A4804BF	08" X 08" - 07" Btm Flange	20
A4805BF	08" X 08" - 08" Btm Flange	20
A4806BF	10" X 06" - 05" Btm Flange	25
A4807BF	10" X 06" - 06" Btm Flange	25
A4808BF	10" X 06" - 07" Btm Flange	20
A4809BF	10" X 10" - 07" Btm Flange	14
A4810BF	10" X 10" - 08" Btm Flange	14
A4811BF	12" X 06" - 06" Btm Flange	21
A4812BF	12" X 06" - 07" Btm Flange	18
A4813BF	12" X 08" - 08" Btm Flange	16
A4814BF	12" X 12" - 08" Btm Flange	12
A4815BF	12" X 12" - 09" Btm Flange	12
A4816BF	12" X 12" - 10" Btm Flange	12
A4817BF	14" X 06" - 08" Btm Flange	16
A4818BF	14" X 14" - 10" Btm Flange	8
A4819BF	06" X 06" - 06" Btm Flange	24
A4820BF	08" X 06" - 06" Btm Flange	14
A4821BF	10" X 08" - 06" Btm Flange	14
A4822BF	10" X 10" - 09" Btm Flange	14
A4823BF	10" X 10" - 10" Btm Flange	14
A4824BF	12" X 06" - 08" Btm Flange	18
A4825BF	14" X 06" - 07" Btm Flange	16
A4826BF	14" X 08" - 09" Btm Flange	10
A4827BF	12" X 12" - 12" Btm Flange	12
A4828BF	14" X 14" - 09" Btm Flange	8
A4829BF	14" X 14" - 12" Btm Flange	8

FACTORY SEALED INSULATED BOXES

A2600FS SERIES TOP TAP SEALED WITH FLANGE (R6 - 1 1/2 INCH INSULATION)



Sealed on the inside!
Don't spend time painting the box!

No Mess. No waiting for it to dry.

Sealed with UL181 approved sealant.

Ask your supplier about a quote today!

All TOP TAP sealed boxes are also available with a no flange option. To order these boxes with no flange, please add NFFS to the end of the part number listed.

A5600FS SERIES SIDE TAP SEALED

(R6 - 1 1/2 INCH INSULATION)

A5601FS	Side Tap Sealed	06x06-05 R6	12
A5602FS	Side Tap Sealed	08x04-05 R6	15
A5603FS	Side Tap Sealed	08x08-06 R6	15
A5604FS	Side Tap Sealed	08x08-07 R6	15
A5605FS	Side Tap Sealed	08x08-08 R6	15
A5607FS	Side Tap Sealed	10x06-06 R6	12
A5608FS	Side Tap Sealed	10x06-07 R6	12
A5609FS	Side Tap Sealed	10x10-07 R6	12
A5610FS	Side Tap Sealed	10x10-08 R6	12
A5611FS	Side Tap Sealed	12x06-06 R6	12
A5612FS	Side Tap Sealed	12x06-07 R6	12
A5614FS	Side Tap Sealed	12x12-08 R6	8
A5615FS	Side Tap Sealed	12x12-09 R6	6
A5617FS	Side Tap Sealed	14x06-08 R6	12
A5618FS	Side Tap Sealed	14x14-10 R6	6
A5619FS	Side Tap Sealed	06x06-06 R6	12
A5624FS	Side Tap Sealed	12x06-08 R6	12

PART #	DESCRIPTION	PER PACK
A2601FS	06 x 06 - 05 R6 SEALED	24
A2602FS	08 x 04 - 05 R6 SEALED	20
A2603FS	08 x 08 - 06 R6 SEALED	16
A2604FS	08 x 08 - 07 R6 SEALED	16
A2605FS	08 x 08 - 08 R6 SEALED	16
A2606FS	10 x 06 - 05 R6 SEALED	20
A2607FS	10 x 06 - 06 R6 SEALED	20
A2608FS	10 x 06 - 07 R6 SEALED	15
A2609FS	10 x 10 - 07 R6 SEALED	12
A2610FS	10 x 10 - 08 R6 SEALED	12
A2611FS	12 x 06 - 06 R6 SEALED	20
A2612FS	12 x 06 - 07 R6 SEALED	15
A2613FS	12 x 08 - 08 R6 SEALED	16
A2614FS	12 x 12 - 08 R6 SEALED	12
A2615FS	12 X 12 - 09 R6 SEALED	12
A2616FS	12 x 12 - 10 R6 SEALED	12
A2617FS	14 x 06 - 08 R6 SEALED	12
A2618FS	14 x 14 - 10 R6 SEALED	6
A2619FS	06 x 06 - 06 R6 SEALED	24
A2620FS	08 x 06 - 06 R6 SEALED	14
A2621FS	10 x 08 - 06 R6 SEALED	12
A2622FS	10 x 10 - 09 R6 SEALED	12
A2623FS	10 x 10 - 10 R6 SEALED	12
A2624FS	12 x 06 - 08 R6 SEALED	15
A2625FS	14 x 06 - 07 R6 SEALED	12
A2626FS	14 x 08 - 09 R6 SEALED	10
A2627FS	12 x 12 - 12 R6 SEALED	12
A2628FS	14 x 14 - 09 R6 SEALED	6
A2629FS	14 x 14 - 12 R6 SEALED	6
A2600060604FS	06 x 06 - 04 R6 SEALED	24
A2600101006FS	10 x 10 - 06 R6 SEALED	12
A2600120809FS	12 x 08 - 09 R6 SEALED	12
A2600121207FS	12 x 12 - 07 R6 SEALED	12

A6600FS SERIES END TAP SEALED (R6 - 1 1/2 INCH INSULATION)

A6602FS	End Tap Sealed	08x04-05 R6	15
A6607FS	End Tap Sealed	10x06-06 R6	12
A6611FS	End Tap Sealed	12x06-06 R6	12
A6612FS	End Tap Sealed	12x06-07 R6	12
A6617FS	End Tap Sealed	14x06-08 R6	13
A6624FS	End Tap Sealed	12x06-08 R6	12

**OTHER SIZES AND STYLES ARE AVAILABLE!
PLEASE CONTACT OUR SALES TEAM FOR
ADDITIONAL INFORMATION AND PRICING!**

LOW PROFILE LINE VENTS

Designed for freon lines, power supply lines or any plumbing lines you need to run.



Removable cover for easy customization & installation.

PART #	DESCRIPTION	PER PACK
F86RLS	Low Profile Flange 8"x6" Refrig Line Set	1



DRYER VENT



V5310C - WALL VENT
w/ Cleanout and Cap



**DVH4A 4" ALUMINUM
DRYER VENT HOOD**



VENT ADAPTER

PART#	DESCRIPTION	PER PACK
DV500	5" Dia Dryer Vent	1
DV600	6" Dia Dryer Vent	1
DV700	7" Dia Dryer Vent	1
DV800	8" Dia Dryer Vent	1
DV1000	10" Dia Dryer Vent	1
DVH4A	Dryer Vent Hood - Aluminum - 4"	12
DHC04	4" Dryer Hose Clamps	50
DH45A	Dryer Hose - 4"x5' Aluminum	6
V5310C	Wall Vent - 5"x3" w/ cleanout & adapter	1
V5310A	Wall Vent Adapter (ONLY)	1

W0000 SERIES WIND BAND CAPS



PART#	DESCRIPTION	PACK
W0300	3" dia.	24
W0400	4" dia.	20
W0500	5" dia.	16
W0600	6" dia.	12
W0700	7" dia.	8
W0800	8" dia.	6
W1000	10" dia.	1
W1200	12" dia.	1

R0000 SERIES VENT CAPS

PART#	DESCRIPTION	PACK
R0300	3" dia.	1
R0400	4" dia.	1
R0500	5" dia.	1
R0600	6" dia.	1
R0700	7" dia.	1



TC0000 SERIES TEXAS CAPS



PART#	DESCRIPTION	PACK
TC0300	3" dia.	36
TC0400	4" dia.	20
TC0500	5" dia.	16
TC0600	6" dia.	10
TC0700	7" dia.	8
TC0800	8" dia.	6
TC1000	10" dia.	1

Joval Goose Neck Jack



FGN-6 SERIES

**2 pc - BASE & NECK with
16"-20" ADJUSTABLE HEIGHT**

PART#	DESCRIPTION	PER PACK
FGN-6	6" x 6" with adust. height of 16"-20"	8

This new design allows you to penetrate roofing when running refrigeration or electrical lines. Standard size pictured, but custom sizing is available to suit your needs. Call or e-mail our sales staff for availability and pricing of other sizes.

F0300WB - F1400WB SERIES

Flat & Pitched Roof Flanges

Combination Roof Flanges are available in every size and pitch listed on next page

Please add WB to the end of the part number shown to specify that you would like to have the Wind Band cap attached to the flange.



F0300TC - F1000TC SERIES

Flat & Pitched Roof Flanges with Texas cap

These combination Roof Flanges are also available in every size up to 10" listed on next page

Please add TC to the end of the part number shown to specify that you would like to have the Texas cap attached to the flange.

LOW PROFILE ROOF VENTS

For Kitchen and Bath Exhaust



PART #	DESCRIPTION	PER PACK
F9104	Low profile roof vent 4"	1
F9105	Low profile roof vent 5"	1
F9106	Low profile roof vent 6"	1
F9107	Low profile roof vent 7"	1
F9108	Low profile roof vent 8"	1
F9109	Low profile roof vent 9"	1
F9110	Low profile roof vent 10"	1
F4000D	Vent 4" Type F - with Damper	1
F4100	Vent 4" Type F - w/ 4" Ext. Collar	1

Additional Low Profile Roof Vents are available. All F9100 series are also available with dampers or 12" extension collars. Please call our sales team for pricing and availability.



F0300 - F1400 SERIES

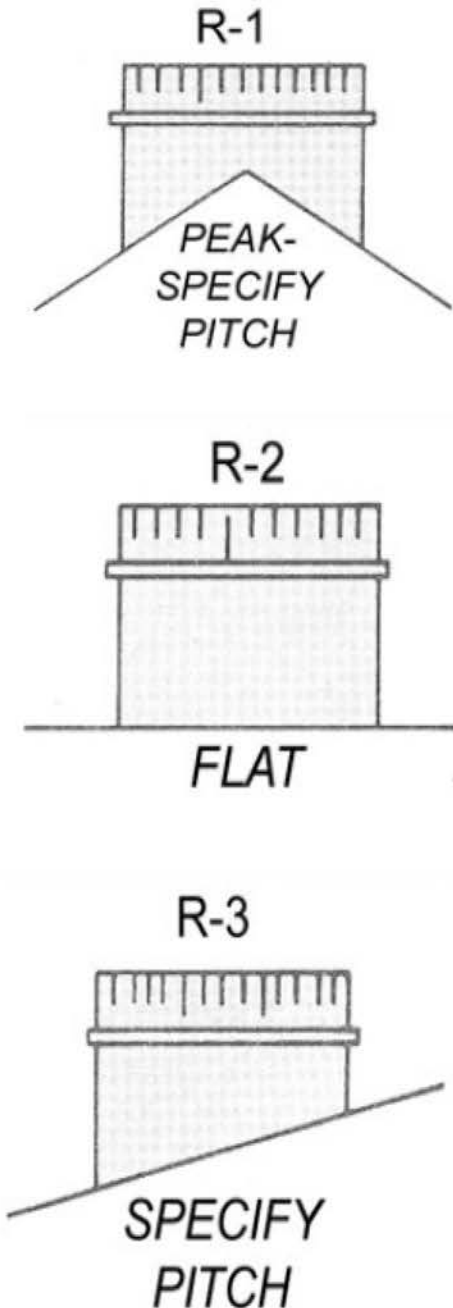
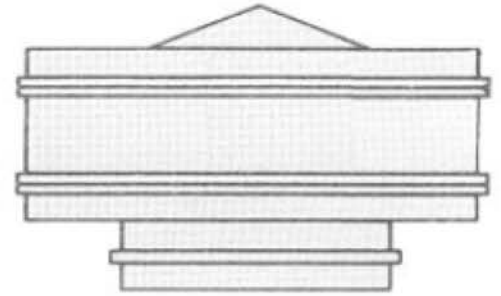
Flat & Pitched Roof Flanges

PART#	DESCRIPTION	PER PACK
F0300	3" FLAT	1
F0301	3" 1/12 pitch	1
F0302	3" 2/12 pitch	1
F0303	3" 3/12 pitch	1
F0304	3" 4/12 pitch	1
F0305	3" 5/12 pitch	1
F0306	3" 6/12 pitch	1
F0307	3" 7/12 pitch	1
F0308	3" 8/12 pitch	1
F0309	3" 9/12 pitch	1
F0310	3" 10/12 pitch	1
F0311	3" 11/12 pitch	1
F0312	3" 12/12 pitch	1
F0400	4" FLAT	1
F0401	4" 1/12 pitch	1
F0402	4" 2/12 pitch	1
F0403	4" 3/12 pitch	1
F0404	4" 4/12 pitch	1
F0405	4" 5/12 pitch	1
F0406	4" 6/12 pitch	1
F0407	4" 7/12 pitch	1
F0408	4" 8/12 pitch	1
F0409	4" 9/12 pitch	1
F0410	4" 10/12 pitch	1
F0411	4" 11/12 pitch	1
F0412	4" 12/12 pitch	1
F0500	5" FLAT	1
F0501	5" 1/12 pitch	1
F0502	5" 2/12 pitch	1
F0503	5" 3/12 pitch	1
F0504	5" 4/12 pitch	1
F0505	5" 5/12 pitch	1
F0506	5" 6/12 pitch	1
F0507	5" 7/12 pitch	1
F0508	5" 8/12 pitch	1
F0509	5" 9/12 pitch	1
F0510	5" 10/12 pitch	1
F0511	5" 11/12 pitch	1
F0512	5" 12/12 pitch	1
F0600	6" FLAT	1
F0601	6" 1/12 pitch	1
F0602	6" 2/12 pitch	1
F0603	6" 3/12 pitch	1
F0604	6" 4/12 pitch	1
F0605	6" 5/12 pitch	1
F0606	6" 6/12 pitch	1
F0607	6" 7/12 pitch	1
F0608	6" 8/12 pitch	1
F0609	6" 9/12 pitch	1
F0610	6" 10/12 pitch	1
F0611	6" 11/12 pitch	1
F0612	6" 12/12 pitch	1

PART #	DESCRIPTION	PER PACK
F0700	7" FLAT	1
F0701	7" 1/12 pitch	1
F0702	7" 2/12 pitch	1
F0703	7" 3/12 pitch	1
F0704	7" 4/12 pitch	1
F0705	7" 5/12 pitch	1
F0706	7" 6/12 pitch	1
F0707	7" 7/12 pitch	1
F0708	7" 8/12 pitch	1
F0709	7" 9/12 pitch	1
F0710	7" 10/12 pitch	1
F0711	7" 11/12 pitch	1
F0712	7" 12/12 pitch	1
F0800	8" FLAT	1
F0801	8" 1/12 pitch	1
F0802	8" 2/12 pitch	1
F0803	8" 3/12 pitch	1
F0804	8" 4/12 pitch	1
F0805	8" 5/12 pitch	1
F0806	8" 6/12 pitch	1
F0807	8" 7/12 pitch	1
F0808	8" 8/12 pitch	1
F0809	8" 9/12 pitch	1
F0810	8" 10/12 pitch	1
F0811	8" 11/12 pitch	1
F0812	8" 12/12 pitch	1
F1000	10" FLAT	1
F1001	10" 1/12 pitch	1
F1002	10" 2/12 pitch	1
F1003	10" 3/12 pitch	1
F1004	10" 4/12 pitch	1
F1005	10" 5/12 pitch	1
F1006	10" 6/12 pitch	1
F1007	10" 7/12 pitch	1
F1008	10" 8/12 pitch	1
F1009	10" 9/12 pitch	1
F1010	10" 10/12 pitch	1
F1011	10" 11/12 pitch	1
F1012	10" 12/12 pitch	1
F1200	12" FLAT	1
F1201	12" 1/12 pitch	1
F1202	12" 2/12 pitch	1
F1203	12" 3/12 pitch	1
F1204	12" 4/12 pitch	1
F1205	12" 5/12 pitch	1
F1206	12" 6/12 pitch	1
F1207	12" 7/12 pitch	1
F1208	12" 8/12 pitch	1
F1209	12" 9/12 pitch	1
F1210	12" 10/12 pitch	1
F1211	12" 11/12 pitch	1
F1212	12" 12/12 pitch	1
F1400	14" FLAT	1

**W000 SERIES
STATIONARY VENTILATORS**
(14"-36" Type W Vent Cap)

PART#	DESCRIPTION	PER PACK
W1400	Type 'W' Vent Cap 14"	1
W1600	Type 'W' Vent Cap 16"	1
W1800	Type 'W' Vent Cap 18"	1
W2000	Type 'W' Vent Cap 20"	1
W2400	Type 'W' Vent Cap 24"	1
W3000	Type 'W' Vent Cap 30"	1
W3600	Type 'W' Vent Cap 36"	1



**Q000 SERIES
FIXED PITCH VENTILATOR BASES**
(Flat, Ridge and Pitched)

PART#	DESCRIPTION	PER PACK
Q0600	Turbine Base 6" Flat R2	1
Q0800	Turbine Base 8" Flat R2	1
Q1000	Turbine Base 10" Flat R2	1
Q1200	Turbine Base 12" Flat R2	1
Q1400	Turbine Base 14" Flat R2	1
Q1600	Turbine Base 16" Flat R2 1	1
Q1800	Turbine Base 18" Flat R2 1	1
Q2000	Turbine Base 20" Flat R2 1	1
Q2400	Turbine Base 24" Flat R2 1	1
Q3000	Turbine Base 30" Flat R2 1	1
Q3600	Turbine Base 36" Flat R2 1	1
Q0600R1	Turbine Base 6" Ridge R1 1	1
Q0800R1	Turbine Base 8" Ridge R1 1	1
Q1000R1	Turbine Base 10" Ridge R1 1	1
Q1200R1	Turbine Base 12" Ridge R1 1	1
Q1400R1	Turbine Base 14" Ridge R1 1	1
Q1600R1	Turbine Base 16" Ridge R1 1	1
Q1800R1	Turbine Base 18" Ridge R1 1	1
Q2000R1	Turbine Base 20" Ridge R1 1	1
Q2400R1	Turbine Base 24" Ridge R1 1	1
Q3000R1	Turbine Base 30" Ridge R1 1	1
Q3600R1	Turbine Base 36" Ridge R1 1	1
Q0600R3	Turbine Base 6" Pitched R3 1	1
Q0800R3	Turbine Base 8" Pitched R3 1	1
Q1000R3	Turbine Base 10" Pitched R3 1	1
Q1200R3	Turbine Base 12" Pitched R3 1	1
Q1400R3	Turbine Base 14" Pitched R3 1	1
Q1600R3	Turbine Base 16" Pitched R3 1	1
Q1800R3	Turbine Base 18" Pitched R3 1	1
Q2000R3	Turbine Base 20" Pitched R3 1	1
Q2400R3	Turbine Base 24" Pitched R3 1	1
Q3000R3	Turbine Base 30" Pitched R3 1	1
Q3600R3	Turbine Base 36" Pitched R3 1	1

Plenums for any HVAC application are now available in the high quality you've come to expect from Joval.

Our Plenums are packaged in space saving boxes that are clearly labeled with the plenum size, in order to protect against dirt and damage.

All Plenums are produced according to your specifications and needs.



Joval Plenums feature:

- 5 piece construction with button lock panels that are easily snapped together.
- High quality rotary duct liner available in R-4, R-6 and R-8
- Liner secured to the panels with weld pins and water based glue.

Please contact our sales team for additional information and pricing!

**Sales@Joval.com
(504) 835-7247**



We can manufacture almost any size, with any fitting needed for your application.
Please call us for pricing and lead time on all special orders.

All pans are available with 3/4" or 1" PVC drain fittings or 3/4" Steel Nipples.
Pans are also available with welded or folded corner seams.

Please provide the following information when ordering:

- Length, Width and Height Dimensions
- Steel Gauge to be used
- Type of Drain/Nipple
- Drain/Nipple Location
- Folded or welded

CONDENSATE SAFETY PANS

Options	26 gauge	22 gauge
Corners	welded or folded	welded
Drain Options	3/4" pvc thread 3/4" metal nipple 3/4" pvc glue	3/4" metal nipple
Wall Height	1 1/2" 2" 2 1/2" 3"	2"



WATER HEATER PANS

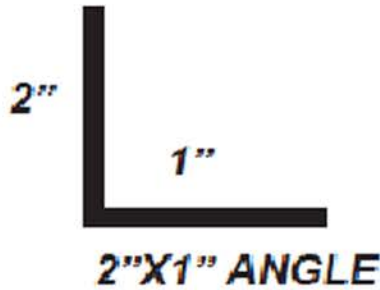
Options	26 gauge
Corners	welded or folded
Drain Options	1" pvc glue 1" pvc thread
Wall Height	4"





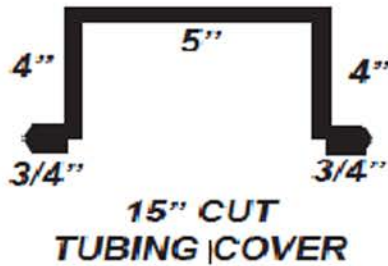
NEW- JOVAL FILTER BOX
 Designed to accomodate 12" x 12" x 1" air filters
 Available with 4" or 6" taps, with dampers

PART #	DESCRIPTION
FAB04	Fresh Air Filter Box- 4" Collar
FAB06	Fresh Air Filter Box- 6" Collar



PART #	DESCRIPTION
R34AN	Angle 1"x2" 24 ga 10'
R38AN	Angle 1"x2" 28 ga 10'
R48AN	Angle 2"x2" 28 ga 10'
Qty - 25 pc. per bundle	

Part # - TUBEC
 Tubing Cover
 4"x5"x4"
 28 ga - 10' in length
 Qty - 1



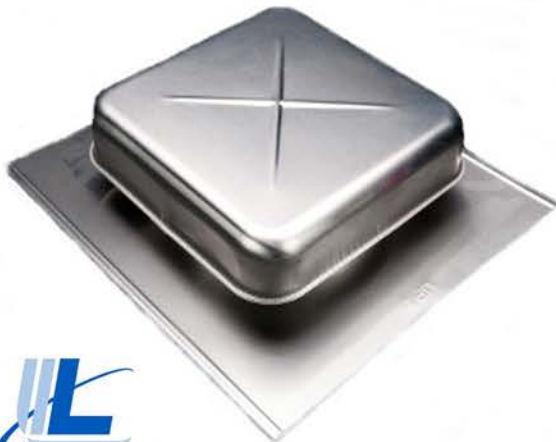
GUTTER SEAL

PART #	DESCRIPTION
HGS50	Huron Gutter Seal - 5oz per tube



RV550 SERIES LOMANCO 550 ROOF VENT

PART #	DESCRIPTION
RV550	9" Lomanco Roof Vent - Mill Finish



The Lomanco 550 series static vent is designed to continuously vent an attic environment. It utilizes air flow through the attic to remove heat and moisture. It features a rolled flange and weather-tight sealed collar. The unique design also ensures that the vent is protected against pests of all types. This vent also features a large nailing flange which makes installation quick and easy. They can be installed on any roof pitch.





TYPE B - DOUBLE WALL for Residential & Commercial Projects



Your Complete Residential Venting Solution

- * Efficient, economical, and easily installed
- * Crafted for use with all listed gas appliances having draft hoods, or other applications listed to be used with Type B Gas Vent
- * Approved for such residential applications as boilers, furnaces, water heaters & space or wall heater venting
- * Single or multi-appliance hook-ups
- * UL/ULC approved
- * Outside casing of galvalume steel
- * Inside conduit of aluminum

Your Complete Commercial Venting Solution

- * Prefabricated, used for venting approved gas burning equipment with flue gas temperatures at the draft hood not exceeding 470°F (245°C)
- * Prestamped holes formed in the male and female couplers making it easy to align lengths and insert screws provided with each component
- * A 1" air wall between the inner conduit of aluminum and the outer casing of galvalume offers high resistance to potential corrosion
- * All components meet the highest standards recommended by UL and ULC



Joval has 3" - 14" available in stock for same day pick up or ship out.

Please call our Sales Team for pricing and availability.

Buy Quality.
Buy Experience.
BUY JOVAL.

Joval

**MANUFACTURING
COMPANY, INC.**

Proudly Producing The Highest
Quality Fittings In The HVAC & Roofing
Industries For Over 65 Years!



Joval Manufacturing Company
120 Iris Avenue Jefferson, LA 70121
PO Box 10113 Jefferson, LA 70181

www.JOVAL.com